

Monthly Report on Short-term Transactions of Electricity in India

September, 2020



Economics Division
Central Electricity Regulatory Commission
36, Janpath, Chanderlok Building



Contents

S.No.	Contents	Page No
	Contents	i
	List of Tables and Figures	ii
	Abbreviations	iii
1	Introduction	1
2	Volume of Short-term Transactions of Electricity	1
3	Price of Short-term Transactions of Electricity	3
3.1	<i>Price of electricity transacted through Traders</i>	3
3.2	<i>Price of electricity transacted through Power Exchanges</i>	3
3.3	<i>Price of electricity transacted through DSM</i>	3
4	Trading Margin	3
5	Volume of Short-term Transactions of Electricity (Regional Entity-wise)	4
6	Congestion on Inter-State Transmission Corridor for Day-Ahead Market and Real Time Market on Power Exchanges	5
7	Volume and Price of Renewable Energy Certificates (RECs)	5
8	Inferences	6

List of Tables and Figures

S. No.	List of Tables and Figures	Page No.
I List of Tables		
Table-1	Volume of Short-term Transactions of Electricity in India	8
Table-2	Percentage Share of Electricity Transacted by Trading Licensees	10
Table-3	Price of Electricity Transacted through Traders	11
Table-4	Price of Electricity Transacted through Traders (Time-wise)	11
Table-5	Price of Electricity Transacted in Day Ahead Market through Power Exchanges	11
Table-6	Price of Electricity Transacted in Real Time Market through Power Exchanges	11
Table-7	Volume and Price of Electricity in Term Ahead Market of IEX	12
Table-8	Volume and Price of Electricity in Term Ahead Market of PXIL	12
Table-9	Volume and Price of Electricity in Green Term Ahead Market of IEX	12
Table-10	Price of Electricity Transacted through DSM	12
Table-11	Volume of Electricity Sold through Bilateral	14
Table-12	Volume of Electricity Purchased through Bilateral	15
Table-13	Volume of Electricity Sold in Day Ahead Market through Power Exchanges	16
Table-14	Volume of Electricity Purchased in Day Ahead Market through Power Exchanges	18
Table-15	Volume of Electricity Sold in Real Time Market through Power Exchanges	19
Table-16	Volume of Electricity Purchased in Real Time Market through Power Exchanges	21
Table-17	Volume of Electricity Under drawal through DSM	22
Table-18	Volume of Electricity Over drawal through DSM	25
Table-19	Total Volume of Net Short-term Transactions of Electricity (Regional Entity-wise)	28
Table-20	Details of Congestion in Power Exchanges	31
Table-21	Volume of Short-term Transactions of Electricity in India (Day-wise)	32
Table-22	Price of Electricity in Day Ahead Market and DSM (Day-wise)	33
Table-23	Price of Electricity in Real Time Market (Day-wise)	34
Table-24	Volume of Short-term Transactions of Electricity (Regional Entity-wise)	35
II List of Figures		
Figure-1	Volume of Various Kinds of Electricity Transactions in Total Electricity Generation	8
Figure-2	Volume of Short-term Transactions of Electricity	8
Figure-3	Volume transacted in different markets segments on Power Exchanges	9
Figure-4	Volume of Short-term Transactions of Electricity (Day-wise)	9
Figure-5	Percentage Share of Electricity Transacted by Trading Licensees	10
Figure-6	Price of Short-term Transactions Electricity	13
Figure-7	Price of Short-term Transactions Electricity (Day-wise)	13

Abbreviations

Abbreviation	Expanded Version
ABSP_ANTP	Acme Bhiwadi Solar Power Private Limited, Anantpur
ACBIL	ACB (India) Limited
ACP	Area Clearing Price
ACV	Area Clearing Volume
ACME_SLR	ACME Solar Power Project
ACME_RUMS	Acme Rewa Ultra Mega Solar Project
ADANI GREEN	Adani Green Energy Limited
ADY1_PVGD	Adyah Solar Energy Pvt Ltd., Block 1 Pavagada Solar Park
ADY2_PVGD	Adyah Solar Energy Pvt Ltd., Block 2 Pavagada Solar Park
ADY3_PVGD	Adyah Solar Energy Pvt Ltd., Block 3 Pavagada Solar Park
ADY6_PVGD	Adyah Solar Energy Pvt Ltd., Block 6 Pavagada Solar Park
ADY10_PVGD	Adyah Solar Energy Pvt Ltd., Block 10 Pavagada Solar Park
ADY13_PVGD	Adyah Solar Energy Pvt Ltd., Block 13 Pavagada Solar Park
AGEMPL BHUJ	Adani Green Energy (MP) Ltd., Bhuj
AHSP_ANTP	Acme Hisar Solar Power Private Limited, Anantpur
AKS_PVGD	ACME Kurukshetra Solar Energy Pvt. Ltd
AKSP_ANTP	Acme Karnal Solar Power Private Limited, Anantpur
ALFANAR_BHUJ	Alfanar Group Wind Project, Bhuj, Gujarat
AMPS Hazira	Arcelor Mittal Nippon Steel, Hazira
APTEL	Appellate Tribunal for Electricity
ARERJL_SLR	Adani Renewable Energy Park Rajasthan Ltd.
ARINSUM_RUMS	Solenergi Rewa Ultra Mega Solar Project
ARS_PVGD	ACME REWARI Solar Power Pvt Ltd.
AVAADA1_PVGD	Avaada Solar Energy Private Ltd., Pavagada Project 1
AVAADA2_PVGD	Avaada Solar Energy Private Ltd., Pavagada Project 2
AZURE_ANTP	Azure Power, Anantpur
AZURE_PVGD	Azure Power, Pavagada
AZURE_SLR	Azure Power Solar Power Project
AZURE34_SLR	Azure Power 34 Pvt. Ltd. Solar Power Project
BALCO	Bharat Aluminum Company Limited
BARC	Bhabha Atomic Research Centre
BBMB	Bhakra Beas Management Board
BETAM_TCN	Betam Wind Energy Private Limited, Tuticorin
BHADRAVATHI HVDC	Bhadravathi High Voltage Direct Current Link
BRBCL	Bhartiya Rail Bijlee Company Limited
CEA	Central Electricity Authority
CERC	Central Electricity Regulatory Commission
CGPL	Coastal Gujarat Power Limited
CHUKHA HEP	Chhukha Hydroelectric Project, Bhutan
CHUZACHEN HEP	Chuzachen Hydro Electric Power Project
CLEAN_SLR	Clean Solar Power Pvt. Ltd
COASTGEN	Coastal Energen Private Limited
DAGACHU	Dagachhu Hydro Power Corporation
DAM	Day Ahead Market
DB POWER	Diligent Power Pvt. Ltd.
DCPP	Donga Mahua Captive Power Plant
DGEN MEGA POWER	DGEN Mega Power Project
DHARIWAL POWER	Dhariwal Power Station

DIKCHU HEP	Dikchu Hydro-electric Project, Sikkim
DOYANG HEP	Doyang Hydro Electric Project
DSM	Deviation Settlement Mechanism
DVC	Damodar Valley Corporation
EMCO	EMCO Energy Limited
ESSAR POWER	Essar Power Limited
ESSAR STEEL	Essar Steel Ltd
FORTUM1_PVGD	Fortum Finnsurya Energy Private Ltd, Pavagada Project 1
FORTUM2_PVGD	Fortum Finnsurya Energy Private Ltd, Pavagada Project 2
FRV_ANTP	Fotowatio Renewable Ventures, Anantapur
FRV_NPK	Fotowatio Renewable Ventures,N P Kunta
GIWEL_BHUI	Green infra wind energy Limited, Bhuj
GIWEL_TCN	Green Infra Wind Energy Limited,Tuticorin
GMR CHHATTISGARH	GMR Chhattisgarh Energy Limited
GMR KAMALANGA	GMR Kamalanga Energy Ltd.
G-TAM	Green Term Ahead Market
HVDC ALPD	Alipurduar High Voltage Direct Current Link
HVDC CHAMPA	Champa-Kurukshetra High Voltage Direct Current Link
HVDC PUS	Pasauli High Voltage Direct Current Link
HVDC RAIGARH	Raigarh-Pugalur High Voltage Direct Current Link
IEX	Indian Energy Exchange Limited
IGSTPS	Indira Gandhi Super Thermal Power Station Jhajjar
IL&FS	Infrastructure Leasing & Financial Services Limited
INOX_BHUI	INOX Wind Limited, Bhuj, Gujarat
J&K	Jammu & Kashmir
JAYPEE NIGRIE	Jaypee Nigrie Super Thermal Power Project
JHABUA POWER MP	Jhabua Thermal Power Project
JINDAL POWER	Jindal Power Limited
JINDAL STAGE-II	Jindal Power Ltd Stage II
JITPL	Jindal India Thermal Power Ltd.
JORETHANG	Jorethang Loop Hydroelectric Power Project
KAPP 3&4	Kakrapar Atomic Power Station Unit 3 & 4
KARCHAM WANGTOO	Karcham Wangtoo H.E. Project
KORBA WEST POWER	Korba West Power Company Limited
KOTESHWAR	Koteshwar Hydro Power project
KREDL_PVGD	Karnataka Renewable Energy Development Ltd, Pavagada
KSK MAHANADI	KSK Mahanadi Power Ltd
KSMPL_SLR	Kilaj Solar (Maharashtra) Private Limited
KURICHU HEP	Kurichhu Hydro-electric Power Station, Bhutan
LANKO_AMK	Lanco Amarkantak Power Private Limited
LANKO BUDHIL	Lanco Budhil Hydro Power Private Limited
LANKO KONDAPALLY	Lanco Kondapally Power Private Limited
LOKTAK	Loktak Power Project
MAHINDRA_RUMS	Mahindra Rewa Ultra Mega Solar Project
MAHOBASL	Mahoba Solar Power Project
MALANA	Malana Hydroelectric Plant
MANGDECHU HEP	Mangdechhu Hydroelectric Project, Mangdechhu River, Bhutan
Maruti Coal	Maruti Clean Coal and Power Limited
MB POWER	MB Power Ltd
MEENAKSHI	Meenakshi Energy Private Limited

MP	Madhya Pradesh
MTPS II	Muzaffarpur Thermal Power Station – Stage II
MYTRAH_TCN	Mytrah Energy (India) Private Limited, Tuticorin
Mus	Million Units
NAPP	Narora Atomic Power Plant
NEEPCO	North Eastern Electric Power Corporation Limited
NEP	Nepal
NFL	National Fertilisers Limited
NHPC STATIONS	National Hydro Electric Power Corporation Ltd. Stations
NJPC	Nathpa Jhakri Hydroelectric Power Station
NLC	Neyveli Lignite Corporation Limited
NLDC	National Load Dispatch Centre
NPGC	Nabinagar Power Generating Company (Pvt.) Limited
NSPCL	NTPC - SAIL Power Company Private Limited
NTECL Vallur	NTPC Tamil Nadu Energy Company Limited Vallur
NTPC_ANTP	NTPC Anantapur
NTPC STATIONS	National Thermal Power Corporation Ltd. Stations
NTPL	NLC Tamil Nadu Power Limited
NVVN	NTPC Vidyut Vyapar Nigam Limited
ONGC Platana	ONGC Tripura Power Company
OPGC	Odisha Power Generation Corporation
ORANGE_TCN	Orange Renewable Power Pvt. Ltd, Tuticorin
OSTRO	Ostro Energy Private Limited
OTC	Over The Counter
PARAM_PVGD	Parampujya Solar Energy Private Ltd
PARE HEP	Pare hydroelectric project, Arunachal Pradesh
PX	Power Exchange
PXIL	Power Exchange India Limited
RAIL	Indian Railways
RAMPUR HEP	Rampur Hydro Electric Power Project
RANGIT HEP	Rangit Hydroelectric power project
RANGANADI HEP	Ranganadi Hydro Electric Power Project, Arunachal Pradesh
RAP-B	Rajasthan Atomic Power Plant-B
RAP-C	Rajasthan Atomic Power Plant-C
REC	Renewable Energy Certificate
REGL	Raigarh Energy Generation Limited
RENEW_BHACHAU	ReNew Power Limited, Bhachau
RENEW_PVGD	ReNew Wind Energy (TN2) Private Limited
RENEW_SLR	Renew Solar
RENEW_SLR_BKN	Renew Solar Bikaner
RGPPL_IR	Ratnagiri Gas and Power Private Ltd., supply to Indian Railways
RGPPL_OTHER	Ratnagiri Gas and Power Private Limited
RLDC	Regional Load Dispatch Centre
RPREL	Raipur Energen Limited
RTC	Round The Clock
RTM	Real Time Market
Sasan UMPP	Sasan Ultra Mega Power Project
SB_SLR	Soft Bank Solar
SBG CLEANTECH_SLR	SBG Cleantech Ltd
SBG_NPK	SB Energy Solar Private Limited, NP Kunta

SBG_PVGD	SB Energy Solar Private Limited, Pavagada
SEMBCORP	Sembcorp Gayatri Power Ltd
SHREE CEMENT	Shree Cement Limited
SIMHAPURI	Simhapuri Energy Private Limited
SKS Power	SKS Power Generation Chhattisgarh Limited
SPECTRUM	Spectrum Power Generation Ltd
TALA HEP	Tala Hydroelectric Project, Bhutan
TASHIDENG HEP	Tashiding Hydro Electric Project, Sikkim
TATA_ANTP	TATA Power Anantapur
TATA_PVGD	Tata Power Renewable Energy Ltd
TATA_SLR	Tata Solar
TEESTA STG3	Teesta Stage 3 Hydro Power Project
TEHRI	Tehri Hydro Electric Power Project
TAM	Term Ahead Market
THERMAL POWERTECH	Thermal Powertech Corporation India Limited
URI-II	Uri-II Hydropower Project
VINDHYACHAL HVDC	Vindhyachal High Voltage Direct Current Link
YARROW_PVGD	Yarrow Infra Structure Private Ltd

1. Introduction

1.1. A well-functioning electricity market requires an effective market monitoring process. As part of the market monitoring process, the monthly report on short-term transactions of electricity, is being prepared and posted on the website of CERC since August 2008. Here, “short-term transactions of electricity” refers to the contracts of less than one year period, for electricity transacted (inter-State) through inter-State Trading Licensees and directly by the Distribution Licensees, Power Exchanges (Indian Energy Exchange Ltd (IEX) and Power Exchange India Ltd (PXIL), and Deviation Settlement Mechanism (DSM). The objectives of the report are: (i) to observe the trends in volume and price of the short-term transactions of electricity; (ii) to analyse competition among the market players; (iii) to analyse effect of congestion on volume of electricity transacted through power exchanges; (iv) to provide information on volume and price of Renewable Energy Certificates (RECs) transacted through power exchanges; and (v) to disclose/disseminate all relevant market information. The details of the report for the month of **September, 2020** are as under:

2. Volume of Short-term Transactions of Electricity

2.1. During September 2020, total electricity generation excluding generation from renewable and captive power plants in India was 109847.89 MUs (Table-1). Of the total electricity generation, 10.52% was transacted through short-term, comprising of 5.05% through Day Ahead Market (DAM) and Real Time Market (RTM) of power exchanges, followed by 3.71% through bilateral (through traders and term-ahead contracts on power exchanges and directly between distribution companies) and 1.76% through DSM (Table-1 & Figure-1).

2.2. Of the total short-term transactions (11552.59 MUs), the electricity transacted in DAM and RTM of power exchanges constitutes 48.00%, followed by 35.27% through bilateral (23.53% through traders and term-ahead contracts on power exchanges and 11.74% directly between distribution companies) and 16.73% through DSM (Table-1 & Figure-2). Daily volume of short-term transactions is shown in Table-21 & Figure-4.

2.3. Of the total volume of electricity transacted through power exchanges, 78.13% of the volume was transacted in DAM, followed by 11.36% in RTM and 10.51% in Term Ahead Market (TAM) (Figure-3).

2.4. The percentage share of electricity traded by each trading licensee in the total volume of electricity traded by all the trading licensees is provided in Table-2 & Figure-5. The volume of electricity transacted by the trading licensees includes bilateral transactions and the transactions undertaken through power exchanges. There were 34 trading licensees as on September 2020. In September 2020, 23 trading licensees were engaged in short term trading. Top 5 trading licensees had a share of 79.33% in the total volume traded by all the licensees. These are PTC India Ltd., Adani Enterprises Ltd., GMR Energy Trading Ltd., Manikaran Power Ltd., and Kreate Energy (I) Pvt. Ltd.

2.5. Herfindahl-Hirschman Index (HHI) has been used for measuring the competition among the trading licensees. Increase in the HHI generally indicates decrease in competition and increase of market concentration, and vice versa. The HHI below 0.15 indicates non-concentration, HHI between 0.15 and 0.25 indicates moderate concentration and HHI above 0.25 indicates high concentration. The HHI has been computed based on the volume of electricity traded (inter-State & intra-State) by inter-State trading licensees, and it was 0.2153 for the month of September 2020, which indicates moderate concentration of market power (Table-2).

2.6. The volume of electricity transacted in the DAM of IEX and PXIL was 4780.99 MUs and 60.20 MUs respectively. The volume of total buy bids and sell bids was 5372.78 MUs and 9669.52 MUs respectively in IEX, while the same was 78.15 MUs and 227.67 MUs respectively in PXIL.

2.7. The volume of electricity transacted in the RTM of IEX was 704.04 MUs. No electricity was transacted in the RTM of PXIL. The volume of total buy bids and sell bids was 924.55 MUs and 2159.32 MUs respectively in IEX, while there were no bids in PXIL. The variation in the volume of buy bids and sell bids placed through power exchanges shows variation in the demand and supply position.

2.8. The volume of electricity transacted in the TAM of IEX and PXIL was 106.64 MUs and 472.44 MUs respectively (Table-7 & Table-8). The volume of electricity transacted in the Green Term Ahead Market (G-TAM) of IEX was 72.34 MUs (Table-9).

3. Price of Short-term Transactions of Electricity

3.1. **Price of electricity transacted through Traders:** The minimum, maximum and weighted average sale prices have been computed for the electricity transacted through traders and the sale prices were ₹2.52/kWh, ₹5.12/kWh and ₹3.98/kWh respectively (Table-3). The weighted average sale prices were also computed for the electricity transacted during Round the Clock (RTC), Peak and Off-peak periods separately, and the sale prices were ₹3.62/kWh, ₹4.89/kWh and ₹4.37/kWh respectively (Table-4).

3.2. **Price of electricity transacted through Power Exchanges:** The minimum, maximum and weighted average prices for the electricity transacted in the DAM of IEX were ₹1.77/kWh, ₹5.44/kWh and ₹2.77/kWh respectively. These prices in the DAM of PXIL were ₹1.04/kWh, ₹6.00/kWh and ₹2.87/kWh respectively (Table-5). The minimum, maximum and weighted average prices for the electricity transacted in the RTM of IEX were ₹0.10/kWh, ₹6.00/kWh and ₹2.67/kWh respectively (Table-6). The price of electricity transacted in the TAM of IEX and PXIL was ₹2.72/kWh and ₹2.62/kWh respectively (Table-7 and Table-8). The price of electricity transacted in the G-TAM of IEX was ₹3.43/kWh (Table-9).

3.3. **Price of electricity transacted through DSM:** The minimum, maximum and average price of DSM was ₹0.00/kWh and ₹8.00/kWh ₹2.83/kWh respectively (Table-10).

3.4. The prices of electricity transacted through trading licensees, power exchanges and DSM and their comparison is shown in Table-22 & 23, Figure-6 & 7.

4. Trading Margin

4.1. As per the CERC (Procedure, Terms and Conditions for grant of trading licence and other related matters) Regulations 2020, the trading licensees are allowed to charge trading margin of not less than 0 paise/kWh and up to 7 paise/kWh. The weighted average trading margin charged by the trading licensees for bilateral transactions during the month was ₹0.020/kWh.

5. Volume of Short-term Transactions of Electricity (Regional Entity¹-Wise)

5.1. Of the total bilateral transactions, top 5 regional entities sold 51.87% of the volume, and these were Madhya Pradesh, Himachal Pradesh, Gujarat, Sembcorp Gayatri Power Ltd. and Raipur Energen Limited. Top 5 regional entities purchased 73.00% of the volume, and these were Punjab, Haryana, Delhi, Tamil Nadu and Uttar Pradesh (Table-11 & 12).

5.2. Of the total DAM transactions of power exchanges, top 5 regional entities sold 38.90% of the volume, and these were Teesta Stage 3 Hydro Power Project, Gujarat, Himachal Pradesh, Sembcorp Gayatri Power Ltd., and Jaypee Nigrie Super Thermal Power Project. Top 5 regional entities purchased 52.56% of the volume, and these were Andhra Pradesh, Maharashtra, Gujarat, Uttar Pradesh and Tamil Nadu (Table-13 & 14).

5.3. Of the total RTM transactions of power exchanges, top 5 regional entities sold 42.69% of the volume, and these were Neyveli Lignite Corporation Limited, Jammu & Kashmir, Karnataka, Gujarat and Madhya Pradesh. Top 5 regional entities purchased 58.83% of the volume, and these were Telangana, Maharashtra, Andhra Pradesh, West Bengal and Delhi (Table-15 & 16).

5.4. Of the total DSM transactions, top 5 regional entities under drew 24.29% of the volume, and these were NHPC Stations, Rajasthan, NTPC Stations (Western Region), Tamil Nadu and Maharashtra (Table-17). Top 5 regional entities overdrew 23.96% of the volume, and these were Tala Hydroelectric Project-Bhutan, NTPC Stations (Eastern Region), Uttar Pradesh, West Bengal and Haryana (Table-18).

5.5. The total volume of net short-term transactions of electricity (Regional entity-wise) i.e. volume of net transactions through bilateral, power exchanges and DSM is shown in Table-19 & 24. Top 5 electricity selling regional entities were Madhya Pradesh, Himachal Pradesh, Teesta Stage 3 Hydro Power Project, Sembcorp Gayatri Power Ltd. and Raipur Energen Limited. Top 5 electricity purchasing regional entities were Punjab, Haryana, Delhi, Uttar Pradesh and Andhra Pradesh.

¹ In case of a state, the entities which are “selling” also include generators connected to state grid and the entities which are “buying” also include open access consumers.

6. Congestion² on Inter-State Transmission Corridor for Day-Ahead Market and Real Time Market on Power Exchanges

6.1. The power exchanges use a price discovery mechanism in which the aggregate demand and supply are matched to arrive at an unconstrained market price and volume. This step assumes that there is no congestion in the inter-State transmission system between different regions. However, in reality, the system operator (NLDC) in coordination with RLDCs limits the flow (due to congestion) in the inter-State transmission system. In such a situation, power exchanges adopt a mechanism called “Market Splitting”³.

6.2. In the month of September 2020, congestion occurred in the DAM of PXIL and RTM of IEX. The details of congestion are shown in Table-20. The volume of electricity that could not be cleared due to congestion & other reasons and could not be transacted through power exchanges is the difference between unconstrained cleared volume and actual cleared volume.

6.3. During the month, the volume of electricity that could not be cleared in DAM on PXIL due to congestion was 0.07% of the unconstrained cleared volume, while the volume of electricity that could not be cleared in the RTM on IEX due to congestion was 0.08% of the unconstrained cleared volume. In terms of time, congestion occurred was 0.21% in the DAM on PXIL and 0.42% in the RTM on IEX (Table-19).

7. Volume and Price of Renewable Energy Certificates (RECs)

7.1. The concept of Renewable Energy Certificates (RECs) seeks to address mismatch between availability of renewable energy and the requirement of the obligated entities to

² “Congestion” means a situation where the demand for transmission capacity exceeds the available transfer capability

³ “Market Splitting” is a mechanism adopted by Power Exchange where the market is split in the event of transmission congestion, into predetermined (by NLDC) bid areas or zones, which are cleared individually at their respective area prices such that the energy balance in every bid area is reached based upon the demand and supply in individual bid areas and using the available transmission corridor capacity between various bid areas simultaneously”
As a result of this market splitting the price of electricity in the importing region, where demand for electricity is more than supply, becomes relatively higher than the price of electricity in the exporting region.

meet their renewable purchase obligation by purchasing green attributes of renewable energy remotely located in the form of RECs. The REC mechanism is a market based instrument, to promote renewable sources of energy and development of electricity market.

7.2. One REC is equivalent to 1 MWh electricity injected into the grid from renewable energy sources. The REC is exchanged only in the power exchanges approved by CERC within the band of a floor price and forbearance (ceiling) price as notified by CERC from time to time. The first REC trading was held on power exchanges in May, 2011.

7.3. There were no transactions of REC in the month of September, 2020 as the scheduled trading was further postponed by Hon'ble APTEL in matter of the CERC order fixing new floor and forbearance price for both Solar and Non-solar RECs.

8. Inferences:

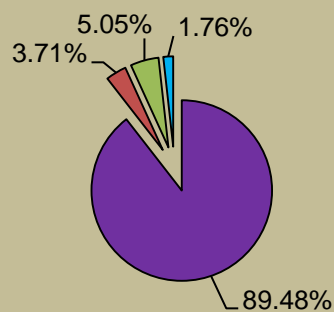
- (1) The percentage of short-term transactions of electricity to total electricity generation was 10.52%.
- (2) Of the total short-term transactions, the electricity transacted in DAM and RTM of power exchanges constitutes 48.00%, followed by 35.27% through bilateral (23.53% through traders and term-ahead contracts on power exchanges and 11.74% directly between distribution companies) and 16.73% through DSM.
- (3) Of the total volume transacted through the power exchanges, 78.13% of the volume was transacted in DAM, followed by 11.36% in RTM and 10.51% in TAM.
- (4) Top 5 trading licensees had a share of 79.33% in the total volume traded by all the trading licensees.
- (5) The Herfindahl Hirschman Index computed for the volume of electricity traded by trading licensees was 0.2153, indicating moderate concentration of market power.
- (6) The weighted average price of electricity transacted through trading licensees was ₹3.98/kWh.

- (7) The weighted average price of electricity transacted in DAM of IEX and PXIL was ₹2.77/kWh and ₹2.87/kWh. The weighted average price of electricity transacted in RTM of IEX was ₹2.67/kWh. No electricity was transacted in the RTM of PXIL.
- (8) The average price of electricity transacted through DSM was ₹2.83/kWh.
- (9) The weighted average trading margin charged by the trading licensees for bilateral transactions was ₹0.020/kWh. The trading margin charged during the month was in line with the Trading Margin regulations.
- (10) Top 5 electricity selling regional entities were Madhya Pradesh, Himachal Pradesh, Teesta Stage 3 Hydro Power Project, Sembcorp Gayatri Power Ltd. and Raipur Energen Limited. Top 5 electricity purchasing regional entities were Punjab, Haryana, Delhi, Uttar Pradesh and Andhra Pradesh.
- (11) In the month of September 2020, congestion occurred in the DAM of PXIL and RTM of IEX. The volume of electricity that could not be cleared in DAM on PXIL due to congestion was 0.07% of the unconstrained cleared volume, while the volume of electricity that could not be cleared in the RTM on IEX due to congestion was 0.08% of the unconstrained cleared volume. In terms of time, congestion occurred was 0.21% in the DAM on PXIL and 0.42% in the RTM on IEX.
- (12) There were no transactions of REC on both the power exchanges in the month of September 2020, as the scheduled REC trading sessions were further postponed by the order of Hon'ble APTEL.

Table-1: VOLUME OF SHORT-TERM TRANSACTIONS OF ELECTRICITY IN INDIA, SEPTEMBER 2020				
Sr.No	Short-term transactions	Volume (MUs)	% to Volume of short-term transactions	% to Total Generation
1	Bilateral	4074.18	35.27	3.71
	(i) Through Traders and PXs	2717.92	23.53	2.47
	(ii) Direct	1356.26	11.74	1.23
2	Through Power Exchanges	5545.23	48.00	5.05
	(i) IEX			
	(a) DAM	4780.99	41.38	4.35
	(b) RTM	704.04	6.09	0.64
	(ii) PXIL			
	(a) DAM	60.20	0.52	0.05
	(b) RTM	0.00	0.00	0.00
3	Through DSM	1933.17	16.73	1.76
	Total	11552.59	-	10.52
	Total Generation	109847.89	-	-

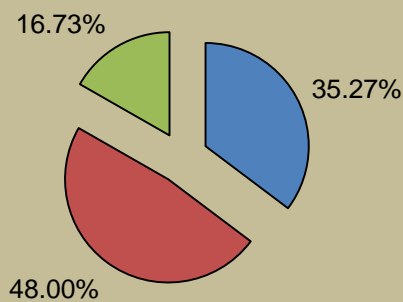
Source: NLDC

Figure-1: Volume of Various Kinds of Electricity Transactions in Total Electricity Generation, September 2020



■ Long-term
 ■ Bilateral
 ■ Through Power Exchanges
 ■ Through DSM

Figure-2: Volume of Short-term Transactions of Electricity, September 2020



■ Bilateral
 ■ Power Exchanges
 ■ DSM

Figure-3: Volume transacted in different markets segments on Power Exchanges, September 2020

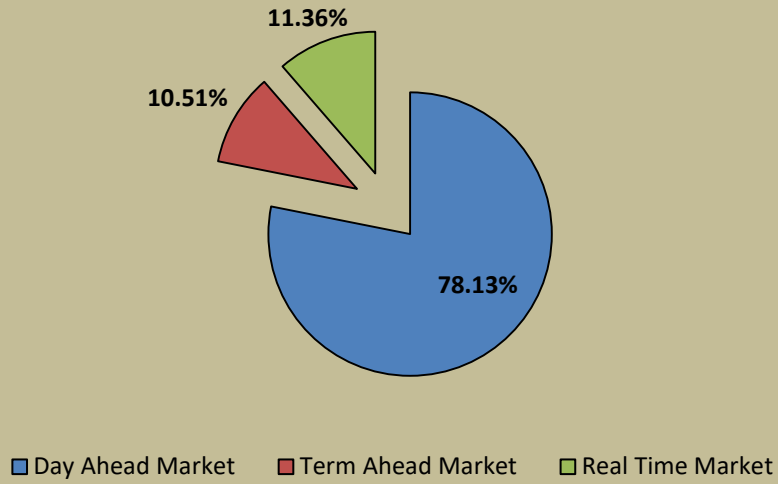


Figure-4: Volume of Short-term Transactions of Electricity, September 2020 (Day-wise)

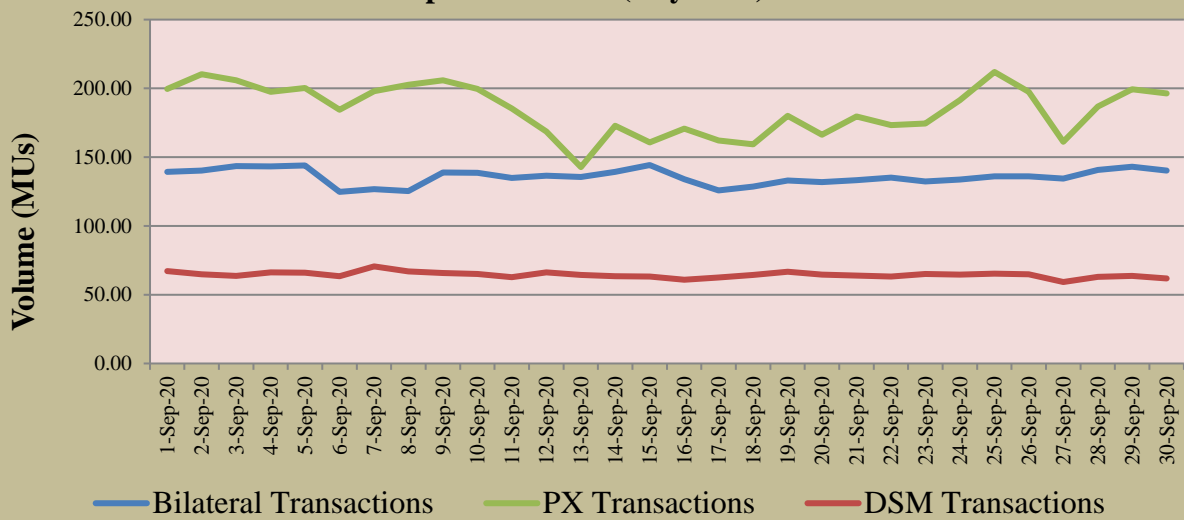


Table-2: PERCENTAGE SHARE OF ELECTRICITY TRANSACTED BY TRADING LICENSEES, SEPTEMBER 2020			
Sr.No	Name of the Trading Licensee	% Share in total Volume transacted by Trading Licensees	Herfindahl-Hirschman Index
1	PTC India Ltd.	40.81	0.1666
2	Adani Enterprises Ltd.	15.34	0.0235
3	GMR Energy Trading Ltd.	9.46	0.0089
4	Manikaran Power Ltd.	7.79	0.0061
5	Kreate Energy (I) Pvt. Ltd.	5.94	0.0035
6	Arunachal Pradesh Power Corporation (P) ltd	5.26	0.0028
7	Tata Power Trading Company (P) Ltd.	4.15	0.0017
8	NTPC Vidyut Vyapar Nigam Ltd.	3.54	0.0013
9	Essar Electric Power Development Corp. Ltd.	2.42	0.0006
10	National Energy Trading & Services Ltd.	1.08	0.0001
11	Statkraft Markets Pvt. Ltd.	0.93	0.0001
12	Instinct Infra & Power Ltd.	0.68	0.0000
13	RPG Power Trading Company Ltd.	0.63	0.0000
14	Gita Power & Infrastructure Private Limited	0.59	0.0000
15	Knowledge Infrastructure Systems (P) Ltd	0.55	0.0000
16	JSW Power Trading Company Ltd	0.28	0.0000
17	Jaiprakash Associates Ltd.	0.19	0.0000
18	Abja Power Private Limited	0.11	0.0000
19	Customized Energy Solutions India (P) Ltd.	0.09	0.0000
20	IPCL Power Trading Pvt. Ltd.	0.06	0.0000
21	Shree Cement Ltd.	0.04	0.0000
22	Phillip Commodities India (P) Ltd.	0.03	0.0000
23	NLC India Ltd.	0.03	0.0000
TOTAL		100.00%	0.2153
Top 5 trading licensees		79.33%	
<i>Note 1: Volume of electricity transacted by the trading licensees includes bilateral transactions (inter-state & intra-state) and the transactions undertaken through power exchanges.</i>			
<i>Note 2: Volume of electricity transacted by Global Energy Ltd is not included.</i>			
<i>Source: Information submitted by trading licensees</i>			

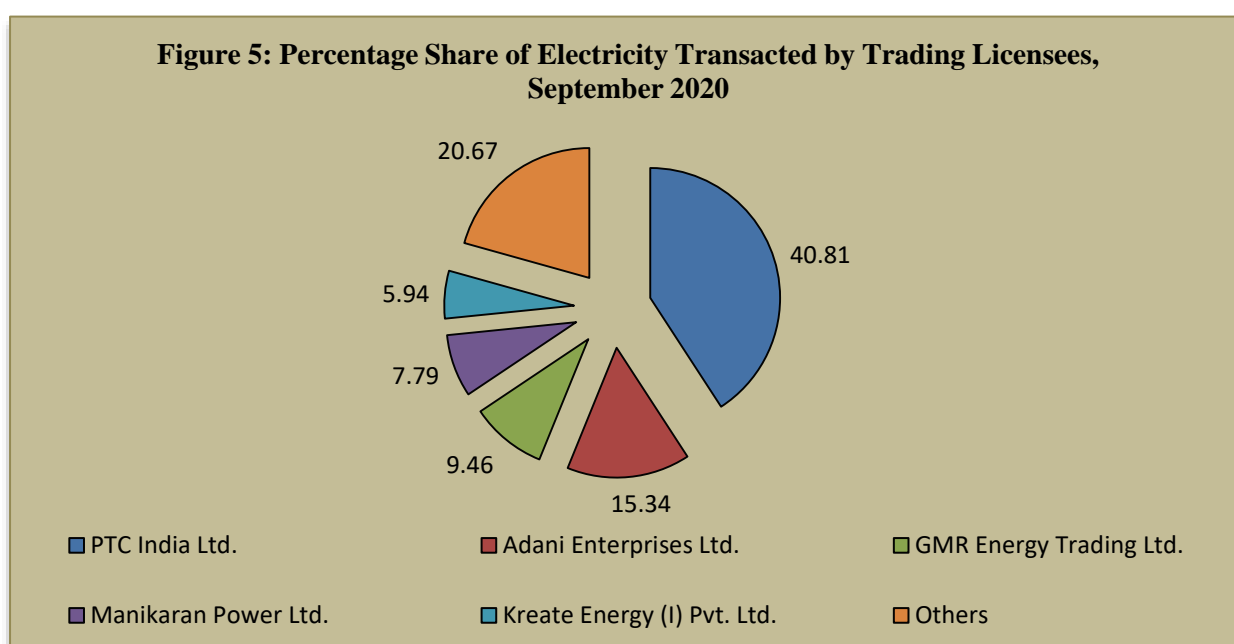


Table-3: PRICE OF ELECTRICITY TRANSACTED THROUGH TRADERS, SEPTEMBER 2020

Sr.No	Item	Sale Price of Traders (₹/kWh)
1	Minimum	2.52
2	Maximum	5.12
3	Weighted Average	3.98

Source: Information submitted by trading licensees

Table-4: PRICE OF ELECTRICITY TRANSACTED THROUGH TRADERS (TIME-WISE), SEPTEMBER 2020

Sr.No	Period of Trade	Sale Price of Traders (₹/kWh)
1	RTC	3.62
2	PEAK	4.89
3	OFF PEAK	4.37

Source: Information submitted by trading licensees

Table-5: PRICE OF ELECTRICITY TRANSACTED IN DAY AHEAD MARKET THROUGH POWER EXCHANGES, SEPTEMBER 2020

Sr.No	ACP	Price in IEX (₹/kWh)	Price in PXIL (₹/kWh)
1	Minimum	1.77	1.04
2	Maximum	5.44	6.00
3	Weighted Average	2.77	2.87

Source: Information submitted by IEX and PXIL

Table-6: PRICE OF ELECTRICITY TRANSACTED IN REAL TIME MARKET THROUGH POWER EXCHANGES, SEPTEMBER 2020

Sr.No	ACP	Price in IEX (₹/kWh)	Price in PXIL (₹/kWh)
1	Minimum	0.10	-
2	Maximum	6.00	-
3	Weighted Average	2.67	-

Source: Information submitted by IEX and PXIL

Table-7: VOLUME AND PRICE OF ELECTRICITY IN TERM AHEAD MARKET OF IEX, SEPTEMBER 2020			
Sr.No	Term ahead contracts	Actual Scheduled Volume (MUs)	Weighted Average Price (₹/kWh)
1	Intra-Day Contracts	11.33	3.92
2	Day Ahead Contingency Contracts	42.39	2.69
3	Daily Contracts	38.52	2.48
4	Weekly Contracts	14.40	2.53
	Total	106.64	2.72

Source: IEX

Table-8: VOLUME AND PRICE OF ELECTRICITY IN TERM AHEAD MARKET OF PXIL, SEPTEMBER 2020			
Sr.No	Term ahead contracts	Actual Scheduled Volume (MUs)	Weighted Average Price (₹/kWh)
1	Intra-Day Contracts	26.36	3.45
2	Any Day(s) Contracts	446.08	2.57
	Total	472.44	2.62

Source: PXIL

Table-9: VOLUME AND PRICE OF ELECTRICITY IN GREEN TERM AHEAD MARKET OF IEX, SEPTEMBER 2020			
Sr.No	Green Term ahead contracts	Actual Scheduled Volume (MUs)	Weighted Average Price (₹/kWh)
1	Intra-Day Contracts	0.800	3.40
2	Day Ahead Contingency Contracts	71.54	3.43
	Total	72.34	3.43

Source: IEX

Table-10: PRICE OF ELECTRICITY TRANSACTED THROUGH DSM, SEPTEMBER 2020		
Sr.No	Item	Price in All India Grid (₹/kWh)
1	Minimum	0.00
2	Maximum	8.00
3	Average	2.83

Source: NLDC

Figure-6: Price of Short-term Transactions of Electricity, September 2020

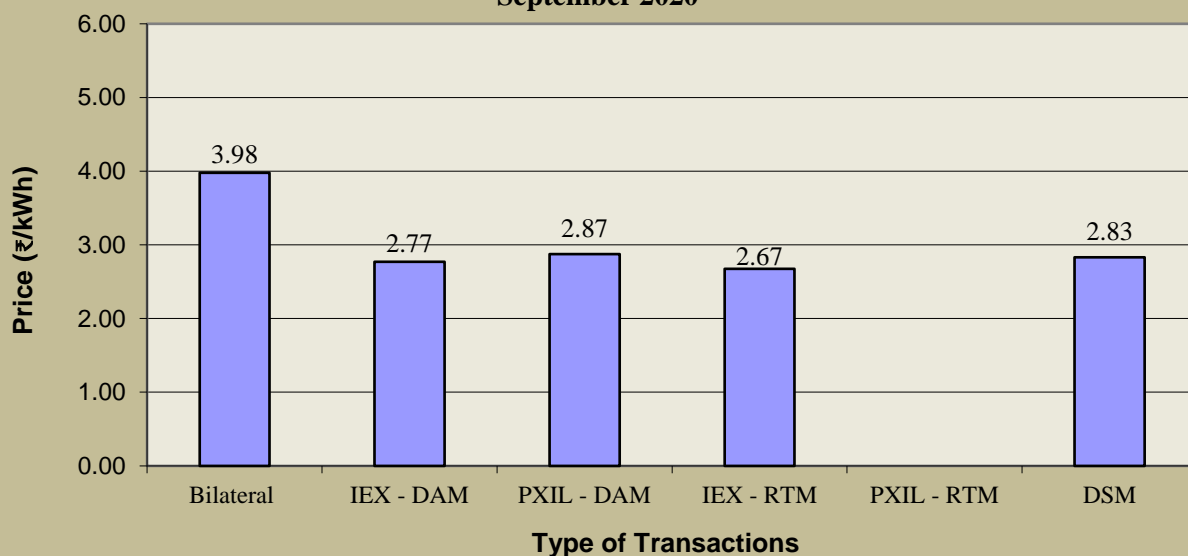
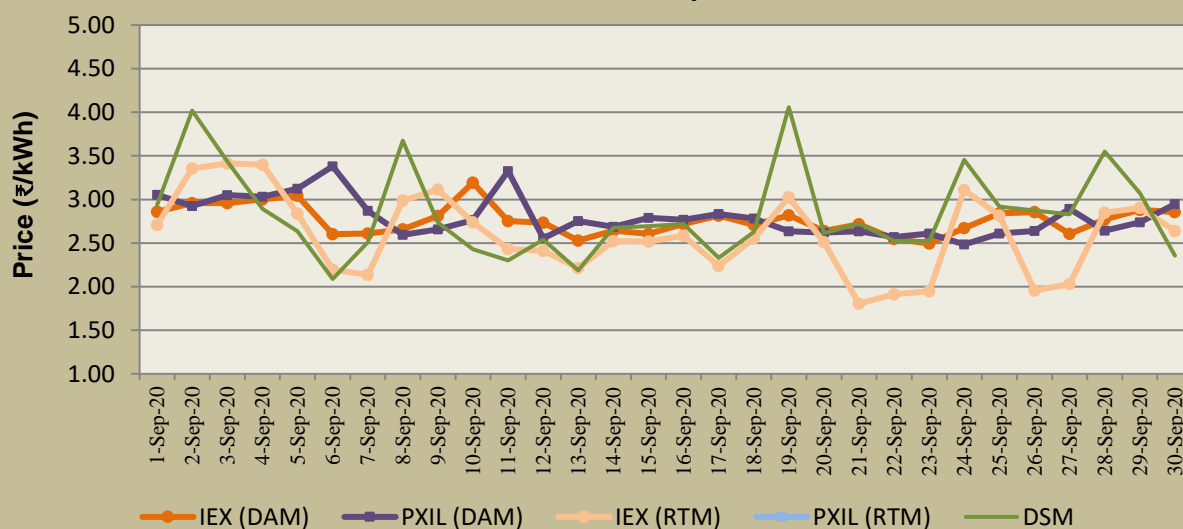


Figure-7: Price of Short-term Transactions of Electricity, September 2020 (Day-wise)



Note: In PXIL, no electricity was transacted in RTM.

Table-11: VOLUME OF ELECTRICITY SOLD THROUGH BILATERAL, SEPTEMBER 2020		
Name of the Entity	Volume of Sale (MUs)	% of Volume
MP	839.30	20.41
HIMACHAL PRADESH	458.08	11.14
GUJARAT	299.56	7.29
SEMBCORP	296.90	7.22
RPREL	238.77	5.81
DB POWER	233.56	5.68
UTTARAKHAND	216.00	5.25
KARNATAKA	158.62	3.86
ADHUNIK POWER LTD	120.12	2.92
RKM POWER	116.16	2.83
JAYPEE NIGRIE	95.50	2.32
ESSAR POWER	91.04	2.21
DAGACHU	87.75	2.13
KERALA	76.15	1.85
TAMIL NADU	75.32	1.83
DVC	68.39	1.66
TELANGANA	64.59	1.57
ONGC PALATANA	53.97	1.31
MEGHALAYA	51.77	1.26
JITPL	48.46	1.18
J & K	47.84	1.16
MANIPUR	42.31	1.03
DIKCHU HEP	38.06	0.93
DELHI	36.00	0.88
SIKKIM	32.23	0.78
SKS POWER	27.00	0.66
EMCO	23.82	0.58
ANDHRA PRADESH	22.38	0.54
AD HYDRO	21.65	0.53
BALCO	20.32	0.49
THERMAL POWERTECH	18.68	0.45
ODISHA	17.97	0.44
SAINJ HEP	12.80	0.31
GOA	10.35	0.25
LANKO_AMK	9.91	0.24
RAJASTHAN	9.39	0.23
TRN ENERGY	7.32	0.18
ARUNACHAL PRADESH	7.20	0.18
MAHARASHTRA	5.48	0.13
CHHATTISGARH	5.32	0.13
BIHAR	1.27	0.03
MB POWER	1.05	0.03
REGL	0.98	0.02
NTPC STATIONS-NER	0.88	0.02
ACBIL	0.73	0.02
UTTAR PRADESH	0.67	0.02
NTPC STATIONS-ER	0.05	0.001
Total	4111.67	100.00
Volume Sold by top 5 Regional Entities	2132.60	51.87

Table-12: VOLUME OF ELECTRICITY PURCHASED THROUGH BILATERAL, SEPTEMBER 2020		
Name of the Entity	Volume of Purchase (MUs)	% of Volume
PUNJAB	1208.51	29.66
HARYANA	505.28	12.40
DELHI	494.45	12.14
TAMIL NADU	421.76	10.35
UTTAR PRADESH	344.09	8.45
WEST BENGAL	218.86	5.37
BANGLADESH	138.55	3.40
TELANGANA	120.55	2.96
JHARKHAND	120.12	2.95
RAJASTHAN	109.62	2.69
BIHAR	86.54	2.12
ASSAM	59.23	1.45
CHHATTISGARH	58.70	1.44
NEPAL(NVVN)	39.95	0.98
GOA	37.83	0.93
MP	28.67	0.70
MAHARASHTRA	23.64	0.58
ODISHA	18.45	0.45
ANDHRA PRADESH	15.01	0.37
DADRA & NAGAR HAVELI	8.42	0.21
AMPS Hazira	6.52	0.16
GUJARAT	5.73	0.14
KARNATAKA	1.68	0.04
DVC	0.99	0.02
DAMAN AND DIU	0.73	0.02
UTTARAKHAND	0.16	0.004
KERALA	0.14	0.003
TOTAL	4074.18	100.00
Volume Purchased by top 5 Regional Entities	2974.10	73.00

Table-13: VOLUME OF ELECTRICITY SOLD IN DAY AHEAD MARKET THROUGH POWER EXCHANGES, SEPTEMBER 2020		
Name of the Entity	Volume of Sale (MUs)	% of Volume
TEESTA STG3	608.27	12.56
GUJARAT	388.93	8.03
HIMACHAL PRADESH	350.52	7.24
SEMBCORP	285.24	5.89
JAYPEE NIGRIE	250.24	5.17
JINDAL POWER	232.70	4.81
ODISHA	221.49	4.58
RPREL	194.61	4.02
ESSAR POWER	183.91	3.80
REGL	135.77	2.80
MP	130.20	2.69
JINDAL STAGE-II	129.35	2.67
J & K	107.32	2.22
EMCO	100.17	2.07
THERMAL POWERTECH	81.99	1.69
CHUZACHEN HEP	80.08	1.65
DB POWER	73.87	1.53
UTTAR PRADESH	73.81	1.52
KARCHAM WANGTOO	73.12	1.51
ASSAM	67.33	1.39
JORETHANG	62.31	1.29
TASHIDENG HEP	58.97	1.22
MB POWER	55.38	1.14
KARNATAKA	51.31	1.06
JHARKHAND	50.84	1.05
CHHATTISGARH	46.95	0.97
SAINJ HEP	45.51	0.94
MARUTI COAL	45.22	0.93
GMR KAMALANGA	44.71	0.92
GOA	43.46	0.90
AD HYDRO	42.03	0.87
TELANGANA	40.93	0.85
BIHAR	40.40	0.83
NEEPCO STATIONS	38.31	0.79
DIKCHU HEP	34.84	0.72
SIKKIM	33.51	0.69
RAJASTHAN	27.80	0.57
WEST BENGAL	24.85	0.51
CHANDIGARH	24.64	0.51
JHABUA POWER_MP	24.44	0.50
ARUNACHAL PRADESH	23.52	0.49
ONGC PALATANA	22.61	0.47
NTPC STATIONS-WR	20.48	0.42
SPECTRUM	19.24	0.40
MAHARASHTRA	17.46	0.36
KERALA	15.37	0.32
MEGHALAYA	14.67	0.30
ACBIL	14.33	0.30
JITPL	12.39	0.26
BALCO	10.14	0.21
ADANI GREEN	8.14	0.17
DVC	6.93	0.14
TAMIL NADU	6.92	0.14
ANDHRA PRADESH	5.60	0.12

LANCO BUDHIL	4.56	0.09
NTPC STATIONS-ER	4.14	0.09
MIZORAM	3.99	0.08
HARYANA	3.67	0.08
NAGALAND	3.44	0.07
IL&FS	2.86	0.06
PUNJAB	2.68	0.06
DELHI	2.63	0.05
ADHUNIK POWER LTD	1.93	0.04
NTPC STATIONS-NER	1.84	0.04
MANIPUR	1.05	0.02
NJPC	0.98	0.02
NTPL	0.81	0.02
SKS POWER	0.79	0.02
NTPC STATIONS-NR	0.57	0.01
NLC	0.54	0.01
NTPC STATIONS-SR	0.53	0.01
RAMPUR HEP	0.50	0.01
DHARIWAL POWER	0.43	0.01
DADRA & NAGAR HAVELI	0.12	0.002
Total	4841.19	100.00
Volume sold by top 5 Regional Entities	1883.20	38.90

Table-14: VOLUME OF ELECTRICITY PURCHASED IN DAY AHEAD MARKET THROUGH POWER EXCHANGES, SEPTEMBER 2020		
Name of the Entity	Volume of Purchase (MUs)	% of Volume
ANDHRA PRADESH	634.71	13.11
MAHARASHTRA	580.12	11.98
GUJARAT	486.86	10.06
UTTAR PRADESH	460.58	9.51
TAMIL NADU	382.08	7.89
DELHI	374.07	7.73
TELANGANA	330.37	6.82
UTTARAKHAND	292.90	6.05
HARYANA	250.54	5.18
PUNJAB	217.87	4.50
BIHAR	216.79	4.48
ASSAM	84.57	1.75
DADRA & NAGAR HAVELI	83.38	1.72
KARNATAKA	80.50	1.66
AMPS Hazira	76.92	1.59
RAJASTHAN	63.04	1.30
KERALA	42.16	0.87
ODISHA	41.92	0.87
WEST BENGAL	40.37	0.83
HIMACHAL PRADESH	31.19	0.64
MP	28.45	0.59
DAMAN AND DIU	13.92	0.29
MANIPUR	9.10	0.19
JHARKHAND	7.78	0.16
MEGHALAYA	5.36	0.11
GOA	3.21	0.07
CHANDIGARH	1.70	0.04
CHHATTISGARH	0.48	0.01
NAGALAND	0.20	0.004
ARUNACHAL PRADESH	0.08	0.002
TOTAL	4841.19	100.00
Volume purchased by top 5 Regional Entities	2544.34	52.56

Table-15: VOLUME OF ELECTRICITY SOLD IN REAL TIME MARKET THROUGH POWER EXCHANGES, SEPTEMBER 2020

Name of the Entity	Volume of Sale (MUs)	% of Volume
NLC	101.46	14.41
J & K	56.56	8.03
KARNATAKA	55.99	7.95
GUJARAT	46.11	6.55
MP	40.47	5.75
ODISHA	35.49	5.04
WEST BENGAL	30.67	4.36
NEEPCO STATIONS	27.51	3.91
UTTAR PRADESH	26.91	3.82
TELANGANA	21.36	3.03
THERMAL POWERTECH	20.04	2.85
RPREL	19.14	2.72
SEMBCORP	15.20	2.16
CHHATTISGARH	13.87	1.97
EMCO	13.65	1.94
NTPC STATIONS-WR	13.28	1.89
JINDAL STAGE-II	12.03	1.71
RAJASTHAN	10.36	1.47
DB POWER	10.36	1.47
DELHI	10.29	1.46
JHABUA POWER_MP	10.12	1.44
NTPC STATIONS-SR	9.86	1.40
KERALA	9.36	1.33
MAHARASHTRA	8.91	1.27
ASSAM	8.41	1.19
ESSAR POWER	6.15	0.87
SIKKIM	5.82	0.83
TASHIDENG HEP	5.82	0.83
HIMACHAL PRADESH	5.52	0.78
JINDAL POWER	5.19	0.74
JHARKHAND	5.03	0.71
JORETHANG	4.13	0.59
BIHAR	3.74	0.53
ONGC PALATANA	3.33	0.47
TRN ENERGY	3.24	0.46
MEGHALAYA	2.97	0.42
NTPC STATIONS-ER	2.62	0.37
SASAN UMPP	2.35	0.33
MB POWER	2.13	0.30
GMR KAMALANGA	2.07	0.29
TRIPURA	1.83	0.26
CHUZACHEN HEP	1.75	0.25
IL&FS	1.39	0.20
ARUNACHAL PRADESH	1.38	0.20
BALCO	1.28	0.18
ANDHRA PRADESH	1.19	0.17
PUNJAB	1.00	0.14
REGL	0.99	0.14

NTPC STATIONS-NER	0.98	0.14
TEESTA STG3	0.78	0.11
NSPCL	0.69	0.10
MARUTI COAL	0.62	0.09
RGPPL_IR	0.48	0.07
NTPC STATIONS-NR	0.39	0.05
HARYANA	0.31	0.04
CHANDIGARH	0.29	0.04
AD HYDRO	0.23	0.03
DIKCHU HEP	0.23	0.03
SPECTRUM	0.15	0.02
TAMIL NADU	0.12	0.02
DHARIWAL POWER	0.11	0.02
DVC	0.10	0.01
NTPL	0.08	0.01
RGPPL_Others	0.06	0.01
KARCHAM WANGTOO	0.06	0.01
NAGALAND	0.05	0.01
JITPL	0.01	0.002
ACBIL	0.01	0.001
Total	704.04	100.00
Volume sold by top 5 Regional Entities	300.59	42.69

Table-16: VOLUME OF ELECTRICITY PURCHASED IN REAL TIME MARKET THROUGH POWER EXCHANGES, SEPTEMBER 2020		
Name of the Entity	Volume of Purchase (MUs)	% of Volume
TELANGANA	101.01	14.35
MAHARASHTRA	91.56	13.00
ANDHRA PRADESH	89.34	12.69
WEST BENGAL	74.79	10.62
DELHI	57.52	8.17
ASSAM	49.21	6.99
RAJASTHAN	35.45	5.04
UTTAR PRADESH	32.82	4.66
HARYANA	30.40	4.32
BIHAR	27.91	3.96
GUJARAT	18.21	2.59
PUNJAB	14.22	2.02
KARNATAKA	9.23	1.31
HIMACHAL PRADESH	8.72	1.24
TAMIL NADU	8.06	1.15
ODISHA	7.21	1.02
KERALA	6.33	0.90
JHARKHAND	6.07	0.86
JINDAL STAGE-II	4.13	0.59
MEGHALAYA	3.89	0.55
TRIPURA	3.60	0.51
JORETHANG	3.23	0.46
GOA	2.54	0.36
TASHIDENG HEP	2.45	0.35
CHHATTISGARH	2.37	0.34
UTTARAKHAND	1.92	0.27
MANIPUR	1.80	0.26
AMPS Hazira	1.55	0.22
MP	1.49	0.21
NAGALAND	1.46	0.21
JINDAL POWER	1.31	0.19
DADRA & NAGAR HAVELI	1.29	0.18
JHABUA POWER_MP	1.19	0.17
SKS POWER	1.17	0.17
ARUNACHAL PRADESH	0.17	0.02
CHUZACHEN HEP	0.17	0.02
DAMAN AND DIU	0.11	0.02
JITPL	0.10	0.01
AD HYDRO	0.06	0.01
TOTAL	704.04	100.00
Volume purchased by top 5 Regional Entities	414.21	58.83

Table-17: VOLUME OF ELECTRICITY UNDER DRAWAL (EXPORTED) THROUGH DSM, SEPTEMBER 2020		
Name of the Entity	Volume of Under drawal (MUs)	% of Volume
NHPC STATIONS	115.29	5.62
RAJASTHAN	108.49	5.29
NTPC STATIONS-WR	100.55	4.90
TAMIL NADU	94.86	4.62
MAHARASHTRA	79.44	3.87
MP	77.88	3.79
TELANGANA	71.44	3.48
KARNATAKA	68.50	3.34
UTTAR PRADESH	67.37	3.28
CHHATTISGARH	59.95	2.92
GUJARAT	59.40	2.89
DELHI	57.42	2.80
CHUKHA HEP	55.94	2.73
KURICHU HEP	54.61	2.66
SASAN UMPP	53.20	2.59
BIHAR	43.91	2.14
NTPC STATIONS-NR	42.70	2.08
ANDHRA PRADESH	42.55	2.07
PUNJAB	39.62	1.93
ODISHA	36.45	1.78
J & K	34.04	1.66
NLC	25.70	1.25
NTPC STATIONS-ER	24.80	1.21
NTPC STATIONS-SR	23.79	1.16
JINDAL STAGE-II	21.95	1.07
DVC	21.20	1.03
HARYANA	21.16	1.03
AMPS Hazira	17.88	0.87
KERALA	16.90	0.82
JHARKHAND	16.82	0.82
WEST BENGAL	16.49	0.80
GIWEL_BHUI	15.03	0.73
BBMB	13.61	0.66
MB POWER	12.91	0.63
UTTARAKHAND	12.27	0.60
ORANGE_TCN	10.69	0.52
RPREL	10.24	0.50
NEEPCO STATIONS	10.14	0.49
MANGDECHU HEP	10.14	0.49
MEGHALAYA	10.13	0.49
ASSAM	9.91	0.48
JINDAL POWER	9.58	0.47
NEPAL(NVVN)	9.38	0.46
TEESTA HEP	9.00	0.44
PONDICHERRY	8.71	0.42
TATA_PVGD	8.37	0.41
GIWEL_TCN	8.28	0.40
NJPC	8.15	0.40
MAITHON POWER LTD	8.08	0.39
KARCHAM WANGTOO	8.05	0.39
RENEW_BHACHAU	7.62	0.37
OSTRO	7.54	0.37
RAMPUR HEP	7.40	0.36
TRIPURA	7.18	0.35
JAYPEE NIGRIE	6.65	0.32
SBG_NPK	6.45	0.31
AGEMPL BHUI	5.55	0.27

HIMACHAL PRADESH	5.47	0.27
GOA	5.26	0.26
ARUNACHAL PRADESH	5.07	0.25
EMCO	4.97	0.24
INOX_BHUI	4.87	0.24
MAHINDRA_RUMS	4.82	0.23
BETAM_TCN	4.78	0.23
ALFANAR_BHUI	4.74	0.23
MYTRAH_TCN	4.65	0.23
ARINSUM_RUMS	4.34	0.21
CLEAN_SLR	4.21	0.21
GMR KAMALANGA	4.08	0.20
MIZORAM	4.04	0.20
TEHRI	3.97	0.19
CGPL	3.94	0.19
RANGANADI HEP	3.93	0.19
LANKO_AMK	3.81	0.19
ESSAR POWER	3.79	0.18
ACME_RUMS	3.77	0.18
SBG_PVGD	3.74	0.18
ACBIL	3.72	0.18
RAP B	3.67	0.18
RENEW_SLR_BKN	3.66	0.18
ACME_SLR	3.63	0.18
ADHUNIK POWER LTD	3.58	0.17
SEMBCORP	3.55	0.17
FORTUM2_PVGD	3.53	0.17
TATA_SLR	3.45	0.17
REGL	3.41	0.17
DADRA & NAGAR HAVELI	3.40	0.17
TRN ENERGY	3.35	0.16
TEESTA STG3	3.29	0.16
SB_SLR	3.17	0.15
NSPCL	3.09	0.15
PARAM_PVGD	3.07	0.15
CHANDIGARH	2.97	0.14
NAGALAND	2.96	0.14
AD HYDRO	2.96	0.14
DB POWER	2.91	0.14
THERMAL POWERTECH	2.87	0.14
ARERJL_SLR	2.85	0.14
AZURE_SLR	2.70	0.13
AVAADA1_PVGD	2.65	0.13
MANIPUR	2.63	0.13
KSK MAHANADI	2.59	0.13
NTPC_ANTP	2.58	0.13
DHARIWAL POWER	2.51	0.12
RAIL	2.39	0.12
AVAADA2_PVGD	2.24	0.11
KOTESHWAR	2.23	0.11
AZURE34_SLR	2.22	0.11
DIKCHU HEP	2.15	0.10
RKM POWER	2.09	0.10
SAINJ HEP	2.06	0.10
TATA_ANTP	2.05	0.10
FORTUM1_PVGD	1.97	0.10
BRBCL,NABINAGAR	1.96	0.10
NTPC STATIONS-NER	1.91	0.09
SIKKIM	1.85	0.09
NEP	1.82	0.09
AZURE_PVGD	1.70	0.08

JHABUA POWER_MP	1.65	0.08
DAMAN AND DIU	1.31	0.06
NTPL	1.26	0.06
ADY13_PVGD	1.19	0.06
JITPL	1.18	0.06
YARROW_PVGD	1.16	0.06
ABSP_ANTP	1.15	0.06
NPGC	1.14	0.06
AZURE_ANTP	1.14	0.06
ADANI GREEN	1.13	0.05
CHUZACHEN HEP	1.12	0.05
IGSTPS	1.11	0.05
ADY6_PVGD	1.01	0.05
FRV_NPK	1.00	0.05
SKS POWER	0.99	0.05
ONGC PALATANA	0.98	0.05
KSMPL_SLR	0.98	0.05
TASHIDENG HEP	0.96	0.05
RAP C	0.96	0.05
RANGIT HEP	0.93	0.05
AHSP_ANTP	0.93	0.05
ADY3_PVGD	0.92	0.04
FRV_ANTP	0.90	0.04
AKSP_ANTP	0.88	0.04
NAPP	0.86	0.04
AKS_PVGD	0.85	0.04
RENEW_PVGD	0.83	0.04
ADY2_PVGD	0.79	0.04
ADY1_PVGD	0.78	0.04
ARS_PVGD	0.77	0.04
IL&FS	0.77	0.04
ADY10_PVGD	0.71	0.03
BARC	0.69	0.03
RENEW_SLR	0.59	0.03
PARE HEP	0.58	0.03
HVDC CHAMPA	0.55	0.03
BHADRAVATHI HVDC	0.54	0.03
COASTGEN	0.53	0.03
BANGLADESH	0.48	0.02
JORETHANG	0.46	0.02
BALCO	0.45	0.02
LOKTAK	0.28	0.01
KREDL_PVGD	0.25	0.01
NFF	0.24	0.01
LANCO BUDHIL	0.24	0.01
MTPS II	0.22	0.01
DOYANG HEP	0.19	0.01
VINDHYACHAL HVDC	0.18	0.01
HVDC PUS	0.14	0.01
NETCL VALLUR	0.11	0.01
RGPPL_IR	0.10	0.005
TALA HEP	0.09	0.005
SHREE CEMENT	0.07	0.003
DCPP	0.03	0.001
HVDC ALPD	0.03	0.001
HVDC RAIGARH	0.02	0.001
Total	2052.49	100.00
Volume Exported by top 5 Regional Entities	498.64	24.29

Table-18: VOLUME OF ELECTRICITY OVER DRAWAL (IMPORTED) THROUGH DSM, SEPTEMBER 2020		
Name of the Entity	Volume of Overdrawal (MUs)	% of Volume
TALA HEP	137.32	7.57
NTPC STATIONS-ER	79.62	4.39
UTTAR PRADESH	77.86	4.29
WEST BENGAL	71.95	3.97
HARYANA	67.91	3.74
ANDHRA PRADESH	67.84	3.74
NTPC STATIONS-NR	64.70	3.57
NTPC STATIONS-WR	63.35	3.49
BIHAR	59.96	3.31
MP	51.13	2.82
GUJARAT	45.98	2.54
TAMIL NADU	44.33	2.44
MAHARASHTRA	43.32	2.39
TELANGANA	38.83	2.14
CGPL	38.10	2.10
KARNATAKA	38.05	2.10
RAJASTHAN	37.10	2.05
J & K	35.94	1.98
NTPC STATIONS-SR	34.86	1.92
HIMACHAL PRADESH	33.82	1.86
UTTARAKHAND	27.38	1.51
DVC	24.39	1.34
ASSAM	24.28	1.34
PUNJAB	22.55	1.24
RGPPL_IR	22.44	1.24
BALCO	21.40	1.18
AMPS Hazira	21.19	1.17
NLC	19.98	1.10
ODISHA	18.72	1.03
JHARKHAND	18.46	1.02
EMCO	13.13	0.72
KERALA	12.38	0.68
NHPC STATIONS	11.35	0.63
GIWEL_TCN	11.33	0.62
NETCL VALLUR	11.05	0.61
RPREL	10.99	0.61
MANGDECHU HEP	10.12	0.56
DAGACHU	9.68	0.53
MYTRAH_TCN	9.39	0.52
KAPP 3&4	9.01	0.50
JHABUA POWER_MP	8.66	0.48
DB POWER	8.24	0.45
NPGC	7.68	0.42
ORANGE_TCN	7.50	0.41
THERMAL POWERTECH	7.21	0.40
NEPAL(NVVN)	7.18	0.40
CHHATTISGARH	7.15	0.39
MB POWER	7.07	0.39
CLEAN_SLR	6.76	0.37
CHANDIGARH	6.58	0.36
GIWEL_BHUJ	6.46	0.36
DAMAN AND DIU	6.41	0.35
TRIPURA	6.29	0.35
TATA_PVGD	6.25	0.34
GOA	6.12	0.34
IGSTPS	5.74	0.32
BBMB	5.67	0.31

MAHINDRA_RUMS	5.64	0.31
ARUNACHAL PRADESH	5.42	0.30
ACME_RUMS	5.24	0.29
REGL	5.19	0.29
NTPC_ANTP	5.09	0.28
MAITHON POWER LTD	5.01	0.28
COASTGEN	4.93	0.27
ARINSUM_RUMS	4.72	0.26
ESSAR POWER	4.68	0.26
BANGLADESH	4.47	0.25
NTPL	4.46	0.25
KARCHAM WANGTOO	4.45	0.25
FORTUM2_PVGD	4.40	0.24
DADRA & NAGAR HAVELI	4.20	0.23
DELHI	4.20	0.23
SBG_NPK	4.11	0.23
NTPC STATIONS-NER	4.00	0.22
RAIL	3.99	0.22
JITPL	3.93	0.22
JORETHANG	3.91	0.22
SBG_PVGD	3.75	0.21
RENEW_SLR_BKN	3.69	0.20
ADHUNIK POWER LTD	3.58	0.20
ACME_SLR	3.52	0.19
BRBCL,NABINAGAR	3.49	0.19
TASHIDENG HEP	3.43	0.19
OSTRO	3.41	0.19
BETAM_TCN	3.18	0.18
MANIPUR	3.09	0.17
PONDICHERRY	3.06	0.17
AVAADA2_PVGD	2.98	0.16
TEESTA STG3	2.76	0.15
PARAM_PVGD	2.76	0.15
AGEMPL BHUJ	2.73	0.15
NAPP	2.70	0.15
AZURE_SLR	2.65	0.15
RENEW_BHACHAU	2.60	0.14
AVAADA1_PVGD	2.55	0.14
SEMBCORP	2.54	0.14
NJPC	2.46	0.14
ARERJL_SLR	2.44	0.13
MTPS II	2.43	0.13
SIKKIM	2.39	0.13
SB_SLR	2.37	0.13
AZURE_PVGD	2.32	0.13
RAP C	2.22	0.12
KREDL_PVGD	2.17	0.12
JINDAL STAGE-II	2.06	0.11
GMR KAMALANGA	2.06	0.11
AD HYDRO	1.96	0.11
MEGHALAYA	1.96	0.11
TATA_ANTP	1.88	0.10
ONGC PALATANA	1.86	0.10
FORTUM1_PVGD	1.84	0.10
RENEW_PVGD	1.80	0.10
JINDAL POWER	1.73	0.10
TATA_SLR	1.67	0.09
INOX_BHUJ	1.67	0.09
NEEPCO STATIONS	1.65	0.09
IL&FS	1.65	0.09
AZURE34_SLR	1.56	0.09
ACBIL	1.55	0.09

NSPCL	1.54	0.08
SASAN UMPP	1.48	0.08
MIZORAM	1.40	0.08
AHSP_ANTP	1.28	0.07
TEHRI	1.27	0.07
AKS_PVGD	1.22	0.07
ADY3_PVGD	1.22	0.07
NEP	1.20	0.07
SAINJ HEP	1.12	0.06
ADY6_PVGD	1.12	0.06
FRV_NPK	1.08	0.06
DGEN MEGA POWER	1.08	0.06
ADY10_PVGD	1.07	0.06
FRV_ANTP	1.05	0.06
AKSP_ANTP	1.04	0.06
YARROW_PVGD	1.02	0.06
ABSP_ANTP	1.01	0.06
ADY2_PVGD	0.97	0.05
ADY13_PVGD	0.97	0.05
ADY1_PVGD	0.93	0.05
ARS_PVGD	0.93	0.05
AZURE_ANTP	0.91	0.05
RKM POWER	0.88	0.05
RENEW_SLR	0.88	0.05
KSK MAHANADI	0.87	0.05
KOTESHWAR	0.86	0.05
DIKCHU HEP	0.84	0.05
RANGIT HEP	0.77	0.04
NAGALAND	0.77	0.04
LANCO BUDHIL	0.76	0.04
SKS POWER	0.71	0.04
SHREE CEMENT	0.68	0.04
CHUZACHEN HEP	0.65	0.04
RAP B	0.58	0.03
KSMPL_SLR	0.54	0.03
MEENAKSHI	0.53	0.03
LANKO KONDAPALLI	0.53	0.03
RANGANADI HEP	0.44	0.02
JAYPEE NIGRIE	0.43	0.02
RAMPUR HEP	0.40	0.02
SIMHAPURI	0.37	0.02
ADANI GREEN	0.37	0.02
DHARIWAL POWER	0.33	0.02
PARE HEP	0.28	0.02
NFF	0.20	0.01
TEESTA HEP	0.13	0.01
LANKO_AMK	0.11	0.01
LOKTAK	0.11	0.01
HVDC ALPD	0.10	0.01
CHUKHA HEP	0.09	0.005
HVDC CHAMPA	0.08	0.004
DOYANG HEP	0.08	0.004
TRN ENERGY	0.06	0.003
HVDC RAIGARH	0.06	0.003
BARC	0.05	0.003
KURICHU HEP	0.04	0.002
HVDC PUS	0.02	0.001
BHADRAVATHI HVDC	0.01	0.001
DCPP	0.003	0.0002
TOTAL	1813.86	100.00
Volume Imported by top 5 Regional Entities	434.66	23.96

Table-19: TOTAL VOLUME OF NET SHORT-TERM TRANSACTIONS OF ELECTRICITY (REGIONAL ENTITY-WISE), SEPTEMBER 2020		
S. No.	Name of the Entity	Total volume of net short-term transactions of electricity*
1	PUNJAB	1419.84
2	HARYANA	829.00
3	DELHI	823.90
4	UTTAR PRADESH	746.59
5	ANDHRA PRADESH	735.19
6	TAMIL NADU	679.01
7	MAHARASHTRA	627.33
8	TELANGANA	392.44
9	WEST BENGAL	333.95
10	BIHAR	301.88
11	BANGLADESH	142.54
12	TALA HEP	137.23
13	ASSAM	131.64
14	UTTARAKHAND	94.09
15	DADRA & NAGAR HAVELI	93.78
16	RAJASTHAN	89.16
17	AMPS Hazira	88.30
18	JHARKHAND	79.73
19	NTPC STATIONS-ER	48.01
20	NEPAL(NVVN)	37.76
21	CGPL	34.16
22	RGPPL_IR	21.87
23	NTPC STATIONS-NR	21.05
24	DAMAN AND DIU	19.85
25	NETCL VALLUR	10.95
26	KAPP 3&4	9.01
27	NPGC	6.54
28	MYTRAH_TCN	4.75
29	IGSTPS	4.63
30	COASTGEN	4.40
31	GIWEL_TCN	3.05
32	CLEAN_SLR	2.55
33	NTPC_ANTP	2.51
34	NTPL	2.32
35	MTPS II	2.21
36	KREDL_PVGD	1.92
37	NAPP	1.83
38	RAIL	1.60
39	BRBCL,NABINAGAR	1.53
40	ACME_RUMS	1.46
41	RAP C	1.26
42	DGEN MEGA POWER	1.08
43	RENEW_PVGD	0.96
44	TRIPURA	0.88
45	FORTUM2_PVGD	0.87
46	MAHINDRA_RUMS	0.82
47	AVAADA2_PVGD	0.73
48	NTPC STATIONS-SR	0.68
49	AZURE_PVGD	0.62
50	SHREE CEMENT	0.61
51	MEENAKSHI	0.53
52	LANKO KONDAPALLI	0.53
53	ARINSUM_RUMS	0.38
54	AKS_PVGD	0.37
55	SIMHAPURI	0.37
56	ADY10_PVGD	0.36
57	AHSP_ANTP	0.36
58	ADY3_PVGD	0.30

59	RENEW_SLR	0.29
60	ADY2_PVGD	0.18
61	AKSP_ANTP	0.16
62	ARS_PVGD	0.16
63	FRV_ANTP	0.15
64	ADY1_PVGD	0.15
65	ADY6_PVGD	0.10
66	FRV_NPK	0.09
67	HVDC ALPD	0.07
68	HVDC RAIGARH	0.04
69	RENEW_SLR_BKN	0.03
70	SBG_PVGD	0.02
71	DCPP	-0.02
72	MANGDECHU HEP	-0.02
73	NFF	-0.04
74	AZURE_SLR	-0.05
75	RGPPL_Others	-0.06
76	AVAADA1_PVGD	-0.09
77	DOYANG HEP	-0.12
78	ACME_SLR	-0.12
79	HVDC PUS	-0.13
80	FORTUM1_PVGD	-0.13
81	ABSP_ANTP	-0.14
82	YARROW_PVGD	-0.14
83	RANGIT HEP	-0.15
84	TATA_ANTP	-0.16
85	LOKTAK	-0.18
86	VINDHYACHAL HVDC	-0.18
87	ADY13_PVGD	-0.22
88	AZURE_ANTP	-0.23
89	PARE HEP	-0.30
90	PARAM_PVGD	-0.31
91	ARERJL_SLR	-0.41
92	KSMPL_SLR	-0.44
93	HVDC CHAMPA	-0.48
94	BHADRAVATHI HVDC	-0.53
95	NEP	-0.62
96	BARC	-0.65
97	AZURE34_SLR	-0.65
98	SB_SLR	-0.80
99	KOTESHWAR	-1.38
100	BETAM_TCN	-1.60
101	NTPC STATIONS-NER	-1.62
102	KSK MAHANADI	-1.72
103	TATA_SLR	-1.78
104	TATA_PVGD	-2.12
105	NSPCL	-2.25
106	SBG_NPK	-2.34
107	TEHRI	-2.70
108	DHARIWAL POWER	-2.71
109	AGEMPL BHUJ	-2.82
110	MAITHON POWER LTD	-3.07
111	RAP B	-3.09
112	ORANGE_TCN	-3.19
113	INOX_BHUJ	-3.20
114	IL&FS	-3.37
115	RANGANADI HEP	-3.49
116	NAGALAND	-4.02
117	LANCO BUDHIL	-4.03
118	OSTRO	-4.13
119	ALFANAR_BHUJ	-4.74
120	RENEW_BHACHAU	-5.02
121	PONDICHERRY	-5.65
122	MIZORAM	-6.63

123	NJPC	-6.68
124	RAMPUR HEP	-7.51
125	BBMB	-7.94
126	GIWEL_BHUJ	-8.57
127	TEESTA HEP	-8.87
128	ADANI GREEN	-8.89
129	GOA	-9.38
130	BALCO	-10.80
131	LANKO_AMK	-13.62
132	TRN ENERGY	-13.85
133	ACBIL	-17.25
134	SPECTRUM	-19.39
135	CHANDIGARH	-19.63
136	JHABUA POWER_MP	-26.37
137	SKS POWER	-26.90
138	ARUNACHAL PRADESH	-31.51
139	MANIPUR	-32.00
140	MARUTI COAL	-45.84
141	GMR KAMALANGA	-48.80
142	SASAN UMPP	-54.07
143	KURICHU HEP	-54.57
144	CHUKHA HEP	-55.85
145	KERALA	-56.78
146	CHHATTISGARH	-57.40
147	JITPL	-58.01
148	SAINJ HEP	-59.26
149	JORETHANG	-59.77
150	TASHIDENG HEP	-59.86
151	MB POWER	-64.40
152	AD HYDRO	-64.85
153	MEGHALAYA	-68.32
154	NTPC STATIONS-WR	-70.97
155	SIKKIM	-71.02
156	DVC	-71.23
157	NEEPCO STATIONS	-74.31
158	DIKCHU HEP	-74.44
159	KARCHAM WANGTOO	-76.78
160	DAGACHU	-78.06
161	ONGC PALATANA	-79.02
162	CHUZACHEN HEP	-82.14
163	NHPC STATIONS	-103.93
164	NLC	-107.72
165	THERMAL POWERTECH	-116.37
166	RKM POWER	-117.37
167	ADHUNIK POWER LTD	-122.05
168	EMCO	-129.48
169	REGL	-135.95
170	JINDAL STAGE-II	-157.14
171	KARNATAKA	-204.96
172	J & K	-209.82
173	ODISHA	-225.11
174	GUJARAT	-237.21
175	JINDAL POWER	-244.43
176	ESSAR POWER	-280.22
177	DB POWER	-312.47
178	JAYPEE NIGRIE	-351.96
179	RPREL	-451.76
180	SEMBCORP	-598.35
181	TEESTA STG3	-609.58
182	HIMACHAL PRADESH	-745.86
183	MP	-978.10

* Total volume of net short-term transactions of electricity includes net of transactions of electricity through bilateral, power exchange and UI

(-) indicates sale and (+) indicates purchase

Table-20: DETAILS OF CONGESTION IN POWER EXCHANGES, SEPTEMBER 2020					
	Details of Congestion	Day Ahead Market		Real Time Market	
		IEX	PXIL	IEX	PXIL
A	Unconstrained Cleared Volume (MUs)	4780.99	60.24	704.59	0.00
B	Actual Cleared Volume and hence scheduled (MUs)	4780.99	60.20	704.04	0.00
C	Volume of electricity that could not be cleared and hence not scheduled because of congestion (MUs) *	0.00	0.05	0.54	0.00
D	Volume of electricity that could not be cleared and hence not scheduled because of reasons other than congestion (MUs)	0.00	0.00	0.00	0.00
E	Volume of electricity that could not be cleared as % to Unconstrained Cleared Volume	0.00%	0.07%	0.08%	0.00%
F	Percentage of the time congestion occurred during the month (Number of hours congestion occurred/Total number of hours in the month)	0.00%	0.21%	0.42%	0.00%
G	Congestion occurrence (%) time block wise				
	0.00 - 6.00 hours	0.00%	0.00%	100.00%	0.00%
	6.00 - 12.00 hours	0.00%	0.00%	0.00%	0.00%
	12.00 - 18.00 hours	0.00%	0.00%	0.00%	0.00%
	18.00 - 24.00 hours	0.00%	100.00%	0.00%	0.00%
<i>*This power would have been scheduled had there been no congestion.</i>					
<i>Source: IEX, PXIL & NLDC</i>					

Table-21: VOLUME OF SHORT-TERM TRANSACTIONS OF ELECTRICITY IN INDIA (DAY-WISE) (MUs), SEPTEMBER 2020								
Date	Bilateral		Day Ahead Market [#]		Real Time Market [#]		Deviation Settlement (Over Drawl + Under Generation)	Total Electricity Generation (MU) as given at CEA Website*
	Through Traders and PXs**	Direct	IEX	PXIL	IEX	PXIL		
1-Sep-20	91.57	47.73	166.01	3.42	30.17	0.00	67.20	3534.02
2-Sep-20	93.25	47.03	164.48	3.94	41.76	0.00	64.77	3638.11
3-Sep-20	95.72	47.89	172.68	3.60	29.56	0.00	63.58	3686.63
4-Sep-20	95.93	47.23	167.57	3.64	26.38	0.00	66.29	3750.24
5-Sep-20	97.70	46.16	174.84	3.11	22.36	0.00	65.96	3768.42
6-Sep-20	78.20	46.56	165.56	2.58	16.40	0.00	63.46	3566.71
7-Sep-20	80.13	46.61	172.80	2.48	22.66	0.00	70.58	3623.90
8-Sep-20	78.84	46.58	174.31	1.63	26.64	0.00	66.84	3769.41
9-Sep-20	92.21	46.70	175.81	1.68	28.32	0.00	65.78	3883.43
10-Sep-20	91.36	47.30	177.04	2.86	19.80	0.00	65.02	3866.94
11-Sep-20	88.22	46.75	167.72	3.71	13.84	0.00	62.75	3828.15
12-Sep-20	89.36	47.23	152.65	1.73	14.32	0.00	66.22	3773.66
13-Sep-20	87.53	48.05	125.62	0.94	16.23	0.00	64.37	3627.68
14-Sep-20	90.45	48.98	150.92	1.37	20.50	0.00	63.42	3689.13
15-Sep-20	95.86	48.41	139.46	1.15	20.19	0.00	63.27	3711.72
16-Sep-20	86.31	47.75	154.86	1.30	14.58	0.00	60.90	3753.30
17-Sep-20	85.08	40.77	147.76	1.23	13.19	0.00	62.53	3692.31
18-Sep-20	87.57	41.02	141.07	1.04	17.13	0.00	64.27	3690.44
19-Sep-20	88.78	44.30	144.75	1.66	33.64	0.00	66.63	3758.31
20-Sep-20	89.14	42.73	140.66	1.19	24.55	0.00	64.55	3630.60
21-Sep-20	88.95	44.39	152.72	1.46	25.46	0.00	64.02	3582.23
22-Sep-20	93.18	42.05	146.06	1.19	26.15	0.00	63.32	3553.44
23-Sep-20	90.48	41.97	141.16	0.84	32.45	0.00	65.14	3497.51
24-Sep-20	91.24	42.40	157.90	1.13	32.51	0.00	64.66	3578.24
25-Sep-20	92.66	43.40	177.06	1.50	33.37	0.00	65.20	3587.22
26-Sep-20	92.66	43.35	182.60	2.11	12.86	0.00	64.81	3513.04
27-Sep-20	92.27	42.16	146.95	1.62	12.57	0.00	59.23	3412.97
28-Sep-20	97.50	43.13	157.43	1.43	28.03	0.00	62.92	3608.36
29-Sep-20	98.77	44.29	167.02	2.04	30.24	0.00	63.73	3653.76
30-Sep-20	97.00	43.36	175.51	2.62	18.19	0.00	61.77	3618.01
Total	2717.92	1356.26	4780.99	60.20	704.04	0.00	1933.17	109847.89

Source: NLDC

* Gross Electricity Generation excluding electricity generation from renewables and captive power plants.

** The volume of bilateral through PXs represents the volume through term-ahead contracts.

Scheduled volume of all the bid areas.

Table-22: PRICE OF SHORT-TERM TRANSACTIONS OF ELECTRICITY (DAY-WISE)(₹/kWh), SEPTEMBER 2020									
Market Segment	Day ahead market of IEX			Day ahead market of PXIL			Under Drawl/Over Drawl from the Grid (DSM)		
Date	Minimum ACP	Maximum ACP	Weighted Average Price*	Minimum ACP	Maximum ACP	Weighted Average Price*	All India Grid		
							Minimum Price	Maximum Price	Average Price**
1-Sep-20	2.20	4.93	2.86	2.44	4.93	3.05	0.00	7.35	2.94
2-Sep-20	2.25	4.90	2.96	2.35	4.50	2.93	0.00	8.00	4.02
3-Sep-20	2.25	4.90	2.96	2.35	4.25	3.05	0.00	8.00	3.44
4-Sep-20	2.18	5.00	3.00	2.48	4.01	3.03	0.00	8.00	2.89
5-Sep-20	2.35	5.44	3.04	2.00	5.47	3.12	0.00	5.78	2.64
6-Sep-20	1.80	3.20	2.60	2.48	6.00	3.38	0.00	6.64	2.09
7-Sep-20	2.10	3.50	2.61	2.28	4.15	2.87	0.00	5.96	2.51
8-Sep-20	2.30	3.61	2.66	2.45	3.08	2.59	0.00	8.00	3.67
9-Sep-20	2.15	3.99	2.81	2.20	3.61	2.66	0.00	6.04	2.73
10-Sep-20	2.60	4.55	3.19	2.41	3.70	2.76	0.00	6.18	2.43
11-Sep-20	2.00	4.05	2.75	1.04	4.75	3.33	0.00	5.36	2.30
12-Sep-20	2.00	3.71	2.74	2.40	2.95	2.55	0.00	5.99	2.54
13-Sep-20	1.94	3.00	2.53	2.46	3.50	2.75	0.00	4.21	2.19
14-Sep-20	1.80	3.50	2.64	2.48	3.50	2.69	0.00	6.30	2.68
15-Sep-20	2.10	3.37	2.61	2.47	3.40	2.79	0.00	6.98	2.69
16-Sep-20	1.92	3.59	2.72	2.50	3.37	2.77	0.00	6.66	2.72
17-Sep-20	2.11	3.83	2.81	2.41	3.40	2.83	0.00	5.68	2.33
18-Sep-20	2.15	3.83	2.71	2.42	3.59	2.78	0.00	6.32	2.63
19-Sep-20	2.06	4.15	2.82	2.42	3.59	2.63	0.54	8.00	4.06
20-Sep-20	1.77	3.37	2.64	2.11	3.51	2.62	0.00	6.30	2.61
21-Sep-20	1.80	4.10	2.71	2.35	3.30	2.64	0.00	7.33	2.72
22-Sep-20	2.00	3.50	2.55	2.00	3.37	2.57	0.00	7.31	2.53
23-Sep-20	2.00	3.50	2.49	2.00	3.37	2.61	0.00	5.92	2.52
24-Sep-20	2.00	4.00	2.67	2.00	3.15	2.48	0.51	8.00	3.45
25-Sep-20	2.00	4.50	2.84	2.42	3.37	2.61	0.00	6.35	2.92
26-Sep-20	2.15	4.70	2.86	2.42	3.45	2.64	0.00	8.00	2.87
27-Sep-20	2.00	3.37	2.60	2.00	3.59	2.89	0.00	7.32	2.83
28-Sep-20	2.00	4.75	2.77	2.37	3.59	2.64	0.00	8.00	3.55
29-Sep-20	2.27	4.46	2.88	2.42	3.83	2.74	0.00	6.37	3.07
30-Sep-20	2.29	4.46	2.86	2.52	4.25	2.95	0.00	5.40	2.35
	1.77#	5.44#	2.77	1.04#	6.00#	2.87	0.00#	8.00#	2.83

Source: Data on price of PX transactions from IEX and PXIL and data on DSM Price from NLDC.

* Weighted average price computed based on Area Clearing Volume (ACV) and Area Clearing Price (ACP) for each hour of the day. Here, ACV and ACP represent the scheduled volume and weighted average price of all the bid areas of power exchanges.

** Simple average price of DSM of 96 time blocks of 15 minutes each in a day. DSM price includes Ceiling DSM Rate +40% additional DSM charge.

Maximum/Minimum in the month

Table-23: PRICE OF REAL TIME MARKET TRANSACTIONS OF ELECTRICITY (DAY-WISE) (₹/kWh), SEPTEMBER 2020						
Market Segment	Real Time market of IEX			Real Time market of PXIL		
Date	Minimum ACP	Maximum ACP	Weighted Average Price*	Minimum ACP	Maximum ACP	Weighted Average Price*
1-Sep-20	2.02	3.80	2.71	--	--	--
2-Sep-20	2.40	5.00	3.35	--	--	--
3-Sep-20	2.50	5.64	3.41	--	--	--
4-Sep-20	2.00	5.64	3.40	--	--	--
5-Sep-20	2.50	4.50	2.84	--	--	--
6-Sep-20	0.90	2.64	2.20	--	--	--
7-Sep-20	0.10	3.03	2.13	--	--	--
8-Sep-20	1.85	4.11	2.99	--	--	--
9-Sep-20	2.45	4.78	3.11	--	--	--
10-Sep-20	2.10	3.34	2.74	--	--	--
11-Sep-20	1.50	3.00	2.43	--	--	--
12-Sep-20	1.01	3.00	2.41	--	--	--
13-Sep-20	1.20	2.72	2.21	--	--	--
14-Sep-20	1.40	3.70	2.52	--	--	--
15-Sep-20	1.50	4.50	2.52	--	--	--
16-Sep-20	1.40	4.00	2.58	--	--	--
17-Sep-20	1.20	3.25	2.24	--	--	--
18-Sep-20	1.50	3.40	2.55	--	--	--
19-Sep-20	2.20	5.01	3.02	--	--	--
20-Sep-20	1.20	4.50	2.51	--	--	--
21-Sep-20	1.40	3.25	1.80	--	--	--
22-Sep-20	1.40	3.10	1.91	--	--	--
23-Sep-20	1.40	3.78	1.95	--	--	--
24-Sep-20	1.75	6.00	3.11	--	--	--
25-Sep-20	2.30	4.52	2.81	--	--	--
26-Sep-20	1.00	2.78	1.95	--	--	--
27-Sep-20	1.00	3.00	2.03	--	--	--
28-Sep-20	2.00	4.99	2.85	--	--	--
29-Sep-20	2.40	4.10	2.90	--	--	--
30-Sep-20	1.50	3.60	2.64	--	--	--
	0.10#	6.00#	2.67	-	-	-

Source: IEX and PXIL

* Weighted average price computed based on Area Clearing Volume (ACV) and Area Clearing Price (ACP) for each hour of the day. Here, ACV and ACP represent the scheduled volume and weighted average price of all the bid areas of power exchanges.

Maximum/Minimum in the month

Table-24: VOLUME OF SHORT-TERM TRANSACTIONS OF ELECTRICITY (REGIONAL ENTITY*-WISE) (MUs), SEPTEMBER 2020

Name of the Entity	Through Bilateral			Through Power Exchange (DAM + RTM)			Through DSM with Regional Grid			Total Net***
	Sale	Purchase	Net**	Sale	Purchase	Net**	Import (Over Draw)	Export (Under Draw)	Net**	
PUNJAB	0.00	1208.51	1208.51	3.68	232.08	228.40	22.55	39.62	-17.07	1419.84
HARYANA	0.00	505.28	505.28	3.98	280.94	276.96	67.91	21.16	46.75	829.00
RAJASTHAN	9.39	109.62	100.23	38.16	98.49	60.33	37.10	108.49	-71.39	89.16
DELHI	36.00	494.45	458.45	12.92	431.59	418.67	4.20	57.42	-53.23	823.90
UTTAR PRADESH	0.67	344.09	343.42	100.72	493.40	392.68	77.86	67.37	10.50	746.59
UTTARAKHAND	216.00	0.16	-215.84	0.00	294.82	294.82	27.38	12.27	15.11	94.09
HIMACHAL P	458.08	0.00	-458.08	356.03	39.91	-316.13	33.82	5.47	28.35	-745.86
J & K	47.84	0.00	-47.84	163.88	0.00	-163.88	35.94	34.04	1.90	-209.82
CHANDIGARH	0.00	0.00	0.00	24.94	1.70	-23.24	6.58	2.97	3.61	-19.63
MP	839.30	28.67	-810.63	170.67	29.94	-140.73	51.13	77.88	-26.75	-978.10
MAHARASHTRA	5.48	23.64	18.16	26.37	671.68	645.30	43.32	79.44	-36.12	627.33
GUJARAT	299.56	5.73	-293.83	435.04	505.07	70.03	45.98	59.40	-13.42	-237.21
CHHATTISGARH	5.32	58.70	53.38	60.83	2.85	-57.98	7.15	59.95	-52.80	-57.40
GOA	10.35	37.83	27.48	43.46	5.74	-37.72	6.12	5.26	0.86	-9.38
DAMAN AND DIU	0.00	0.73	0.73	0.00	14.03	14.03	6.41	1.31	5.10	19.85
DADRA & NAGAR H	0.00	8.42	8.42	0.12	84.67	84.55	4.20	3.40	0.80	93.78
ANDHRA P	22.38	15.01	-7.37	6.78	724.04	717.26	67.84	42.55	25.29	735.19
KARNATAKA	158.62	1.68	-156.94	107.29	89.73	-17.56	38.05	68.50	-30.46	-204.96
KERALA	76.15	0.14	-76.01	24.73	48.49	23.75	12.38	16.90	-4.53	-56.78
TAMIL NADU	75.32	421.76	346.44	7.04	390.14	383.10	44.33	94.86	-50.53	679.01
PONDICHERY	0.00	0.00	0.00	0.00	0.00	0.00	3.06	8.71	-5.65	-5.65
TELANGANA	64.59	120.55	55.96	62.29	431.38	369.10	38.83	71.44	-32.62	392.44
WEST BENGAL	0.00	218.86	218.86	55.53	115.16	59.63	71.95	16.49	55.46	333.95
ODISHA	17.97	18.45	0.48	256.98	49.13	-207.85	18.72	36.45	-17.74	-225.11
BIHAR	1.27	86.54	85.27	44.14	244.70	200.56	59.96	43.91	16.05	301.88
JHARKHAND	0.00	120.12	120.12	55.87	13.84	-42.03	18.46	16.82	1.64	79.73
SIKKIM	32.23	0.00	-32.23	39.33	0.00	-39.33	2.39	1.85	0.54	-71.02
DVC	68.39	0.99	-67.40	7.02	0.00	-7.02	24.39	21.20	3.19	-71.23
ARUNACHAL P	7.20	0.00	-7.20	24.90	0.25	-24.66	5.42	5.07	0.34	-31.51
ASSAM	0.00	59.23	59.23	75.74	133.78	58.04	24.28	9.91	14.37	131.64
MANIPUR	42.31	0.00	-42.31	1.05	10.89	9.85	3.09	2.63	0.46	-32.00
MEGHALAYA	51.77	0.00	-51.77	17.64	9.26	-8.38	1.96	10.13	-8.17	-68.32
MIZORAM	0.00	0.00	0.00	3.99	0.00	-3.99	1.40	4.04	-2.64	-6.63
NAGALAND	0.00	0.00	0.00	3.49	1.66	-1.83	0.77	2.96	-2.19	-4.02
TRIPURA	0.00	0.00	0.00	1.83	3.60	1.77	6.29	7.18	-0.89	0.88
NTPC STNS-NR	0.00	0.00	0.00	0.95	0.00	-0.95	64.70	42.70	22.00	21.05
NHPC STNS	0.00	0.00	0.00	0.00	0.00	0.00	11.35	115.29	-103.93	-103.93
NFF	0.00	0.00	0.00	0.00	0.00	0.00	0.20	0.24	-0.04	-0.04
RAIL	0.00	0.00	0.00	0.00	0.00	0.00	3.99	2.39	1.60	1.60
NEP	0.00	0.00	0.00	0.00	0.00	0.00	1.20	1.82	-0.62	-0.62
NAPP	0.00	0.00	0.00	0.00	0.00	0.00	2.70	0.86	1.83	1.83
RAP B	0.00	0.00	0.00	0.00	0.00	0.00	0.58	3.67	-3.09	-3.09
NJPC	0.00	0.00	0.00	0.98	0.00	-0.98	2.46	8.15	-5.69	-6.68
TEHRI	0.00	0.00	0.00	0.00	0.00	0.00	1.27	3.97	-2.70	-2.70
BBMB	0.00	0.00	0.00	0.00	0.00	0.00	5.67	13.61	-7.94	-7.94
RAP C	0.00	0.00	0.00	0.00	0.00	0.00	2.22	0.96	1.26	1.26
AD HYDRO	21.65	0.00	-21.65	42.26	0.06	-42.20	1.96	2.96	-0.99	-64.85
IGSTPS	0.00	0.00	0.00	0.00	0.00	0.00	5.74	1.11	4.63	4.63
KOTESHWAR	0.00	0.00	0.00	0.00	0.00	0.00	0.86	2.23	-1.38	-1.38
KARCHAM WANGTONG	0.00	0.00	0.00	73.18	0.00	-73.18	4.45	8.05	-3.60	-76.78
SHREE CEMENT	0.00	0.00	0.00	0.00	0.00	0.00	0.68	0.07	0.61	0.61
LANCO BUDHIL	0.00	0.00	0.00	4.56	0.00	-4.56	0.76	0.24	0.53	-4.03
RAMPUR HEP	0.00	0.00	0.00	0.50	0.00	-0.50	0.40	7.40	-7.00	-7.51
SAINJ HEP	12.80	0.00	-12.80	45.51	0.00	-45.51	1.12	2.06	-0.95	-59.26
RENEW_SLR	0.00	0.00	0.00	0.00	0.00	0.00	0.88	0.59	0.29	0.29
AZURE_SLR	0.00	0.00	0.00	0.00	0.00	0.00	2.65	2.70	-0.05	-0.05
SB_SLR	0.00	0.00	0.00	0.00	0.00	0.00	2.37	3.17	-0.80	-0.80
ACME_SLR	0.00	0.00	0.00	0.00	0.00	0.00	3.52	3.63	-0.12	-0.12

AZURE34_SLR	0.00	0.00	0.00	0.00	0.00	0.00	1.56	2.22	-0.65	-0.65
TATA_SLR	0.00	0.00	0.00	0.00	0.00	0.00	1.67	3.45	-1.78	-1.78
RENEW_SLR_BKN	0.00	0.00	0.00	0.00	0.00	0.00	3.69	3.66	0.03	0.03
CLEAN_SLR	0.00	0.00	0.00	0.00	0.00	0.00	6.76	4.21	2.55	2.55
ARERJL_SLR	0.00	0.00	0.00	0.00	0.00	0.00	2.44	2.85	-0.41	-0.41
KSMPL_SLR	0.00	0.00	0.00	0.00	0.00	0.00	0.54	0.98	-0.44	-0.44
ADANI GREEN	0.00	0.00	0.00	8.14	0.00	-8.14	0.37	1.13	-0.76	-8.89
NTPC STNS-WR	0.00	0.00	0.00	33.76	0.00	-33.76	63.35	100.55	-37.21	-70.97
BHADRAVATHI HV	0.00	0.00	0.00	0.00	0.00	0.00	0.01	0.54	-0.53	-0.53
VINDHYACHAL HV	0.00	0.00	0.00	0.00	0.00	0.00	0.00	0.18	-0.18	-0.18
JINDAL POWER	0.00	0.00	0.00	237.89	1.31	-236.58	1.73	9.58	-7.86	-244.43
LANKO_AMK	9.91	0.00	-9.91	0.00	0.00	0.00	0.11	3.81	-3.70	-13.62
NSPCL	0.00	0.00	0.00	0.69	0.00	-0.69	1.54	3.09	-1.56	-2.25
ACBIL	0.73	0.00	-0.73	14.34	0.00	-14.34	1.55	3.72	-2.17	-17.25
BALCO	20.32	0.00	-20.32	11.42	0.00	-11.42	21.40	0.45	20.94	-10.80
CGPL	0.00	0.00	0.00	0.00	0.00	0.00	38.10	3.94	34.16	34.16
DCPP	0.00	0.00	0.00	0.00	0.00	0.00	0.00	0.03	-0.02	-0.02
EMCO	23.82	0.00	-23.82	113.82	0.00	-113.82	13.13	4.97	8.16	-129.48
KSK MAHANADI	0.00	0.00	0.00	0.00	0.00	0.00	0.87	2.59	-1.72	-1.72
ESSAR POWER	91.04	0.00	-91.04	190.06	0.00	-190.06	4.68	3.79	0.89	-280.22
JINDAL STAGE-II	0.00	0.00	0.00	141.37	4.13	-137.25	2.06	21.95	-19.89	-157.14
DB POWER	233.56	0.00	-233.56	84.24	0.00	-84.24	8.24	2.91	5.33	-312.47
DHARIWAL POWER	0.00	0.00	0.00	0.54	0.00	-0.54	0.33	2.51	-2.17	-2.71
JAYPEE NIGRIE	95.50	0.00	-95.50	250.24	0.00	-250.24	0.43	6.65	-6.22	-351.96
DGEN MEGA POWER	0.00	0.00	0.00	0.00	0.00	0.00	1.08	0.00	1.08	1.08
MB POWER	1.05	0.00	-1.05	57.50	0.00	-57.50	7.07	12.91	-5.85	-64.40
MARUTI COAL	0.00	0.00	0.00	45.84	0.00	-45.84	0.00	0.00	0.00	-45.84
SPECTRUM	0.00	0.00	0.00	19.39	0.00	-19.39	0.00	0.00	0.00	-19.39
JHABUA POWER_M	0.00	0.00	0.00	34.56	1.19	-33.37	8.66	1.65	7.01	-26.37
SASAN UMPP	0.00	0.00	0.00	2.35	0.00	-2.35	1.48	53.20	-51.72	-54.07
TRN ENERGY	7.32	0.00	-7.32	3.24	0.00	-3.24	0.06	3.35	-3.29	-13.85
RKM POWER	116.16	0.00	-116.16	0.00	0.00	0.00	0.88	2.09	-1.21	-117.37
SKS POWER	27.00	0.00	-27.00	0.79	1.17	0.38	0.71	0.99	-0.28	-26.90
BARC	0.00	0.00	0.00	0.00	0.00	0.00	0.05	0.69	-0.65	-0.65
KAPP 3&4	0.00	0.00	0.00	0.00	0.00	0.00	9.01	0.00	9.01	9.01
HVDC CHAMPA	0.00	0.00	0.00	0.00	0.00	0.00	0.08	0.55	-0.48	-0.48
MAHINDRA_RUMS	0.00	0.00	0.00	0.00	0.00	0.00	5.64	4.82	0.82	0.82
ARINSUM_RUMS	0.00	0.00	0.00	0.00	0.00	0.00	4.72	4.34	0.38	0.38
OSTRO	0.00	0.00	0.00	0.00	0.00	0.00	3.41	7.54	-4.13	-4.13
ACME_RUMS	0.00	0.00	0.00	0.00	0.00	0.00	5.24	3.77	1.46	1.46
RENEW_BHACHAU	0.00	0.00	0.00	0.00	0.00	0.00	2.60	7.62	-5.02	-5.02
GIWEL_BHUJ	0.00	0.00	0.00	0.00	0.00	0.00	6.46	15.03	-8.57	-8.57
INOX_BHUJ	0.00	0.00	0.00	0.00	0.00	0.00	1.67	4.87	-3.20	-3.20
AGEMPL_BHUJ	0.00	0.00	0.00	0.00	0.00	0.00	2.73	5.55	-2.82	-2.82
REGL	0.98	0.00	-0.98	136.76	0.00	-136.76	5.19	3.41	1.78	-135.95
RPREL	238.77	0.00	-238.77	213.74	0.00	-213.74	10.99	10.24	0.75	-451.76
AMPS Hazira	0.00	6.52	6.52	0.00	78.47	78.47	21.19	17.88	3.31	88.30
HVDC RAIGARH	0.00	0.00	0.00	0.00	0.00	0.00	0.06	0.02	0.04	0.04
RGPPL_IR	0.00	0.00	0.00	0.48	0.00	-0.48	22.44	0.10	22.35	21.87
RGPPL_Others	0.00	0.00	0.00	0.06	0.00	-0.06	0.00	0.00	0.00	-0.06
ALFANAR_BHUJ	0.00	0.00	0.00	0.00	0.00	0.00	0.00	4.74	-4.74	-4.74
NTPC STNS-SR	0.00	0.00	0.00	10.39	0.00	-10.39	34.86	23.79	11.07	0.68
LANKO KONDAPAL	0.00	0.00	0.00	0.00	0.00	0.00	0.53	0.00	0.53	0.53
SIMHAPURI	0.00	0.00	0.00	0.00	0.00	0.00	0.37	0.00	0.37	0.37
MEENAKSHI	0.00	0.00	0.00	0.00	0.00	0.00	0.53	0.00	0.53	0.53
COASTGEN	0.00	0.00	0.00	0.00	0.00	0.00	4.93	0.53	4.40	4.40
THERMAL POWER T	18.68	0.00	-18.68	102.03	0.00	-102.03	7.21	2.87	4.34	-116.37
IL&FS	0.00	0.00	0.00	4.25	0.00	-4.25	1.65	0.77	0.885	-3.365
NLC	0.00	0.00	0.00	102.00	0.00	-102.00	19.98	25.70	-5.72	-107.72
SEMBCORP	296.90	0.00	-296.90	300.44	0.00	-300.44	2.54	3.55	-1.01	-598.35
NETCL VALLUR	0.00	0.00	0.00	0.00	0.00	0.00	11.05	0.11	10.95	10.95
NTPL	0.00	0.00	0.00	0.89	0.00	-0.89	4.46	1.26	3.21	2.32
AHSP_ANTP	0.00	0.00	0.00	0.00	0.00	0.00	1.28	0.93	0.36	0.36
AKSP_ANTP	0.00	0.00	0.00	0.00	0.00	0.00	1.04	0.88	0.16	0.16
ABSP_ANTP	0.00	0.00	0.00	0.00	0.00	0.00	1.01	1.15	-0.14	-0.14

AZURE_ANTP	0.00	0.00	0.00	0.00	0.00	0.00	0.91	1.14	-0.23	-0.23
TATA_ANTP	0.00	0.00	0.00	0.00	0.00	0.00	1.88	2.05	-0.16	-0.16
FRV_ANTP	0.00	0.00	0.00	0.00	0.00	0.00	1.05	0.90	0.15	0.15
NTPC_ANTP	0.00	0.00	0.00	0.00	0.00	0.00	5.09	2.58	2.51	2.51
GIWEL_TCN	0.00	0.00	0.00	0.00	0.00	0.00	11.33	8.28	3.05	3.05
MYTRAH_TCN	0.00	0.00	0.00	0.00	0.00	0.00	9.39	4.65	4.75	4.75
FRV_NPK	0.00	0.00	0.00	0.00	0.00	0.00	1.08	1.00	0.09	0.09
ORANGE_TCN	0.00	0.00	0.00	0.00	0.00	0.00	7.50	10.69	-3.19	-3.19
BETAM_TCN	0.00	0.00	0.00	0.00	0.00	0.00	3.18	4.78	-1.60	-1.60
SBG_PVGD	0.00	0.00	0.00	0.00	0.00	0.00	3.75	3.74	0.02	0.02
SBG_NPK	0.00	0.00	0.00	0.00	0.00	0.00	4.11	6.45	-2.34	-2.34
FORTUM1_PVGD	0.00	0.00	0.00	0.00	0.00	0.00	1.84	1.97	-0.13	-0.13
PARAM_PVGD	0.00	0.00	0.00	0.00	0.00	0.00	2.76	3.07	-0.31	-0.31
YARROW_PVGD	0.00	0.00	0.00	0.00	0.00	0.00	1.02	1.16	-0.14	-0.14
TATA_PVGD	0.00	0.00	0.00	0.00	0.00	0.00	6.25	8.37	-2.12	-2.12
RENEW_PVGD	0.00	0.00	0.00	0.00	0.00	0.00	1.80	0.83	0.96	0.96
AKS_PVGD	0.00	0.00	0.00	0.00	0.00	0.00	1.22	0.85	0.37	0.37
ARS_PVGD	0.00	0.00	0.00	0.00	0.00	0.00	0.93	0.77	0.16	0.16
AVAADA1_PVGD	0.00	0.00	0.00	0.00	0.00	0.00	2.55	2.65	-0.09	-0.09
ADY1_PVGD	0.00	0.00	0.00	0.00	0.00	0.00	0.93	0.78	0.15	0.15
ADY2_PVGD	0.00	0.00	0.00	0.00	0.00	0.00	0.97	0.79	0.18	0.18
ADY13_PVGD	0.00	0.00	0.00	0.00	0.00	0.00	0.97	1.19	-0.22	-0.22
ADY3_PVGD	0.00	0.00	0.00	0.00	0.00	0.00	1.22	0.92	0.30	0.30
ADY6_PVGD	0.00	0.00	0.00	0.00	0.00	0.00	1.12	1.01	0.10	0.10
ADY10_PVGD	0.00	0.00	0.00	0.00	0.00	0.00	1.07	0.71	0.36	0.36
AZURE_PVGD	0.00	0.00	0.00	0.00	0.00	0.00	2.32	1.70	0.62	0.62
FORTUM2_PVGD	0.00	0.00	0.00	0.00	0.00	0.00	4.40	3.53	0.87	0.87
AVAADA2_PVGD	0.00	0.00	0.00	0.00	0.00	0.00	2.98	2.24	0.73	0.73
KREDL_PVGD	0.00	0.00	0.00	0.00	0.00	0.00	2.17	0.25	1.92	1.92
NTPC STNS-ER	0.05	0.00	-0.05	6.76	0.00	-6.76	79.62	24.80	54.81	48.01
MAITHON POWER L	0.00	0.00	0.00	0.00	0.00	0.00	5.01	8.08	-3.07	-3.07
NPGC	0.00	0.00	0.00	0.00	0.00	0.00	7.68	1.14	6.54	6.54
ADHUNIK POWER L	120.12	0.00	-120.12	1.93	0.00	-1.93	3.58	3.58	-0.01	-122.05
CHUZACHEN HEP	0.00	0.00	0.00	81.83	0.17	-81.67	0.65	1.12	-0.48	-82.14
RANGIT HEP	0.00	0.00	0.00	0.00	0.00	0.00	0.77	0.93	-0.15	-0.15
GMR KAMALANGA	0.00	0.00	0.00	46.78	0.00	-46.78	2.06	4.08	-2.02	-48.80
JITPL	48.46	0.00	-48.46	12.40	0.10	-12.30	3.93	1.18	2.75	-58.01
TEESTA HEP	0.00	0.00	0.00	0.00	0.00	0.00	0.13	9.00	-8.87	-8.87
DAGACHU	87.75	0.00	-87.75	0.00	0.00	0.00	9.68	0.00	9.68	-78.06
JORETHANG	0.00	0.00	0.00	66.45	3.23	-63.22	3.91	0.46	3.45	-59.77
NEPAL(NVVN)	0.00	39.95	39.95	0.00	0.00	0.00	7.18	9.38	-2.19	37.76
BANGLADESH	0.00	138.55	138.55	0.00	0.00	0.00	4.47	0.48	3.98	142.54
HVDC PUS	0.00	0.00	0.00	0.00	0.00	0.00	0.02	0.14	-0.13	-0.13
TEESTA STG3	0.00	0.00	0.00	609.05	0.00	-609.05	2.76	3.29	-0.54	-609.58
DIKCHU HEP	38.06	0.00	-38.06	35.07	0.00	-35.07	0.84	2.15	-1.31	-74.44
HVDC ALPD	0.00	0.00	0.00	0.00	0.00	0.00	0.10	0.03	0.07	0.07
TASHIDENG HEP	0.00	0.00	0.00	64.78	2.45	-62.33	3.43	0.96	2.47	-59.86
BRBCL,NABINAGA	0.00	0.00	0.00	0.00	0.00	0.00	3.49	1.96	1.53	1.53
MTPS II	0.00	0.00	0.00	0.00	0.00	0.00	2.43	0.22	2.21	2.21
TALA HEP	0.00	0.00	0.00	0.00	0.00	0.00	137.32	0.09	137.23	137.23
CHUKHA HEP	0.00	0.00	0.00	0.00	0.00	0.00	0.09	55.94	-55.85	-55.85
KURICHU HEP	0.00	0.00	0.00	0.00	0.00	0.00	0.04	54.61	-54.57	-54.57
MANGDECHU HEP	0.00	0.00	0.00	0.00	0.00	0.00	10.12	10.14	-0.02	-0.02
NTPC STNS-NER	0.88	0.00	-0.88	2.82	0.00	-2.82	4.00	1.91	2.08	-1.62
NEEPCO STATIONS	0.00	0.00	0.00	65.82	0.00	-65.82	1.65	10.14	-8.49	-74.31
RANGANADI HEP	0.00	0.00	0.00	0.00	0.00	0.00	0.44	3.93	-3.49	-3.49
DOYANG HEP	0.00	0.00	0.00	0.00	0.00	0.00	0.08	0.19	-0.12	-0.12
ONGC PALATANA	53.97	0.00	-53.97	25.94	0.00	-25.94	1.86	0.98	0.88	-79.02
LOKTAK	0.00	0.00	0.00	0.00	0.00	0.00	0.11	0.28	-0.18	-0.18
PARE HEP	0.00	0.00	0.00	0.00	0.00	0.00	0.28	0.58	-0.30	-0.30
<i>Source: NLDC</i>										
<i>* in case of a state, the entities which are "selling" also include generators connected to state grid and the entities which are "buying" also include open access consumers.</i>										
<i>** (-) indicates sale and (+) indicates purchase,</i>										
<i>*** Total net includes net of transactions through bilateral, power exchange and DSM</i>										